

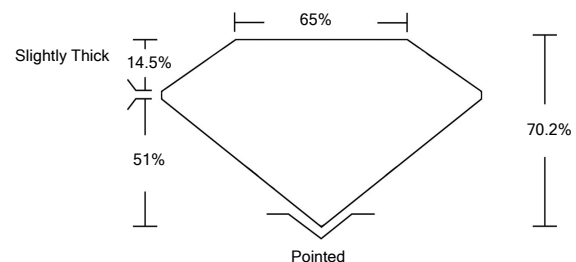


ELECTRONIC COPY

LABORATORY GROWN DIAMOND REPORT

LG533214905

PROPORTIONS



GRADING SCALES

COLOR GRADING SCALE	CL	NC	FT	VLT	LT	
	COLORLESS D-F	NEAR COLORLESS G-J	FAINT K-M	VERY LIGHT N-R	LIGHT S-Z	
CLARITY (10x) GRADING SCALE	FL	IF	VVS	VS	SI	I
	FLAWLESS INTERNALLY FLAWLESS	VERY VERY SLIGHTLY INCLUDED	VERY SLIGHTLY INCLUDED	SLIGHTLY INCLUDED	INCLUDED	

June 17, 2022
 IGI Report Number **LG533214905**
 Description **LABORATORY GROWN DIAMOND**
 Shape and Cutting Style **CUT CORNERED RECTANGULAR MODIFIED BRILLIANT**
 Measurements **7.75 X 5.53 X 3.88 MM**

GRADING RESULTS

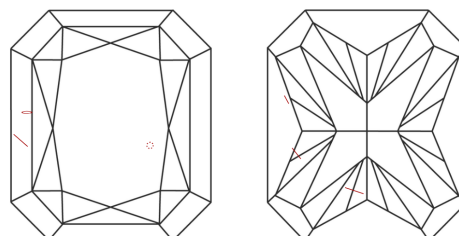
Carat Weight **1.50 CARAT**
 Color Grade **G**
 Clarity Grade **SI 1**

ADDITIONAL GRADING INFORMATION

Polish **EXCELLENT**
 Symmetry **EXCELLENT**
 Fluorescence **NONE**
 Inscription(s) **LABGROWN IGI LG533214905**

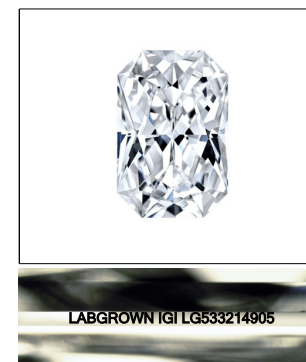
Comments: This Laboratory Grown Diamond was created by Chemical Vapor Deposition (CVD) growth process and may include post-growth treatment.
 Type IIa

CLARITY CHARACTERISTICS



KEY TO SYMBOLS

Red symbols indicate internal characteristics.
 Green symbols indicate external characteristics.



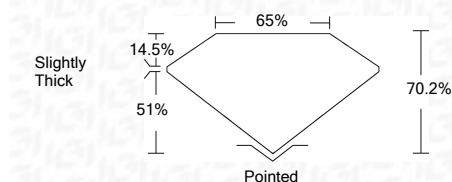
LASERSCRIBESM

Sample Image Used

June 17, 2022
 IGI Report Number **LG533214905**
 Description **LABORATORY GROWN DIAMOND**
 Shape and Cutting Style **CUT CORNERED RECTANGULAR MODIFIED BRILLIANT**
 Measurements **7.75 X 5.53 X 3.88 MM**

GRADING RESULTS

Carat Weight **1.50 CARAT**
 Color Grade **G**
 Clarity Grade **SI 1**



ADDITIONAL GRADING INFORMATION

Polish **EXCELLENT**
 Symmetry **EXCELLENT**
 Fluorescence **NONE**
 Inscription(s) **LABGROWN IGI LG533214905**

Comments: This Laboratory Grown Diamond was created by Chemical Vapor Deposition (CVD) growth process and may include post-growth treatment.
 Type IIa



IGI

IGI Report No. LG533214905	CUT CORNERED RECT. MODIFIED BRILLIANT	7.75 X 5.53 X 3.88 MM	1.50 CARAT	G	SI 1	70.2%	65%	Slightly Thick	Pointed	EXCELLENT	EXCELLENT	NONE	LABGROWN IGI LG533214905	Comments:
June 17, 2022	CUT CORNERED RECT. MODIFIED BRILLIANT	7.75 X 5.53 X 3.88 MM	1.50 CARAT	G	SI 1	70.2%	65%	Slightly Thick	Pointed	EXCELLENT	EXCELLENT	NONE	LABGROWN IGI LG533214905	This Laboratory Grown Diamond was created by Chemical Vapor Deposition (CVD) growth process and may include post-growth treatment. Type IIa