



ELECTRONIC COPY

LABORATORY GROWN DIAMOND REPORT

LG533279492

June 22, 2022
IGI Report Number LG533279492

Description LABORATORY GROWN DIAMOND
Shape and Cutting Style ROUND BRILLIANT

Measurements 9.34 - 9.37 X 5.62 MM

GRADING RESULTS

Carat Weight 3.04 CARATS
Color Grade F
Clarity Grade VS 1
Cut Grade EXCELLENT

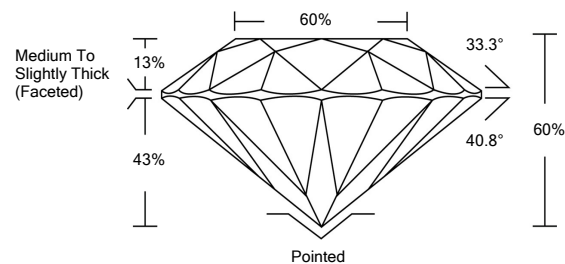
ADDITIONAL GRADING INFORMATION

Polish EXCELLENT
Symmetry EXCELLENT
Fluorescence NONE

Inscription(s) LABGROWN IGI LG533279492

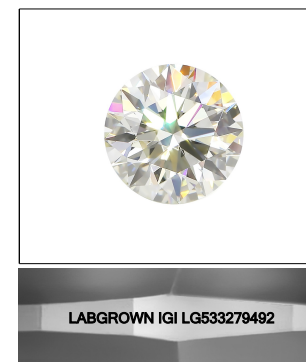
Comments: HEARTS & ARROWS
This Laboratory Grown Diamond was created by Chemical Vapor Deposition (CVD) growth process and may include post-growth treatment.
Type IIa

PROPORTIONS



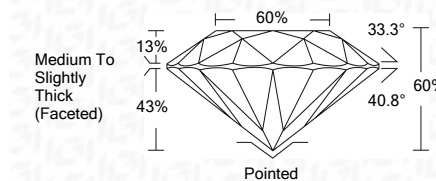
GRADING SCALES

Table showing Color Grading Scale (CL to LT) and Clarity (10x) Grading Scale (FL to I).



LASERSCRIBE SM
Sample Image Used

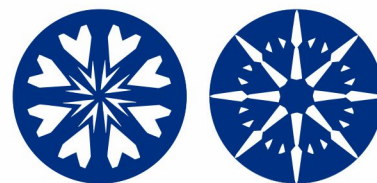
June 22, 2022
IGI Report Number LG533279492
Description LABORATORY GROWN DIAMOND
Shape and Cutting Style ROUND BRILLIANT
Measurements 9.34 - 9.37 X 5.62 MM
GRADING RESULTS
Carat Weight 3.04 CARATS
Color Grade F
Clarity Grade VS 1
Cut Grade EXCELLENT



ADDITIONAL GRADING INFORMATION

Polish EXCELLENT
Symmetry EXCELLENT
Fluorescence NONE
Inscription(s) LABGROWN IGI LG533279492

Comments: HEARTS & ARROWS
This Laboratory Grown Diamond was created by Chemical Vapor Deposition (CVD) growth process and may include post-growth treatment.
Type IIa



www.igi.org



IGI

June 22, 2022
IGI Report No. LG533279492
ROUND BRILLIANT
9.34 - 9.37 X 5.62 MM
Carat Weight 3.04 CARATS
Color Grade F
Clarity Grade VS 1
Cut Grade EXCELLENT
Depth 60%
Table 60%
Girdle Medium To Slightly Thick (Faceted)
Culet Pointed
Polish EXCELLENT
Symmetry EXCELLENT
Fluorescence NONE
Inscriptions(s) LABGROWN IGI LG533279492
Comments: HEARTS & ARROWS
This Laboratory Grown Diamond was created by Chemical Vapor Deposition (CVD) growth process and may include post-growth treatment.
Type IIa