



ELECTRONIC COPY

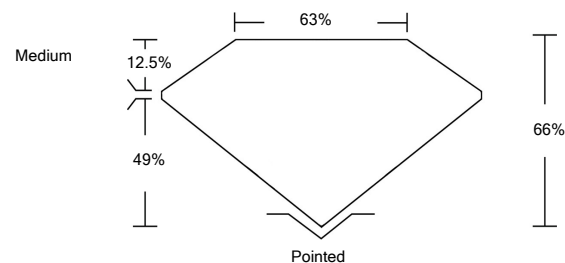
LG533284973

LABORATORY GROWN DIAMOND REPORT

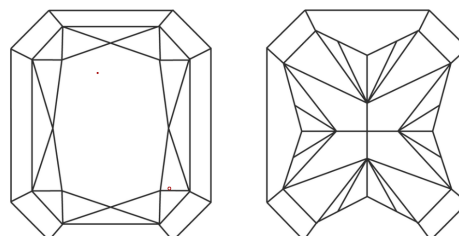
GRADING SCALES

COLOR GRADING SCALE	CL	NC	FT	VLT	LT	
	COLORLESS D-F	NEAR COLORLESS G-J	FAINT K-M	VERY LIGHT N-R	LIGHT S-Z	
CLARITY (10x) GRADING SCALE	FL	IF	VVS	VS	SI	I
	FLAWLESS INTERNALLY FLAWLESS	VERY VERY SLIGHTLY INCLUDED	VERY SLIGHTLY INCLUDED	SLIGHTLY INCLUDED	INCLUDED	

PROPORTIONS

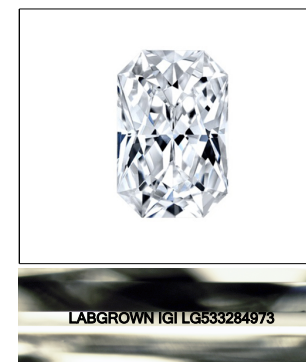


CLARITY CHARACTERISTICS



KEY TO SYMBOLS

Red symbols indicate internal characteristics.
Green symbols indicate external characteristics.



LASERSCRIBESM

Sample Image Used

June 10, 2022

IGI Report Number

LG533284973

Description

**LABORATORY GROWN
DIAMOND**

Shape and Cutting Style

**CUT CORNERED
RECTANGULAR MODIFIED
BRILLIANT**

Measurements

7.38 X 4.88 X 3.22 MM

GRADING RESULTS

Carat Weight

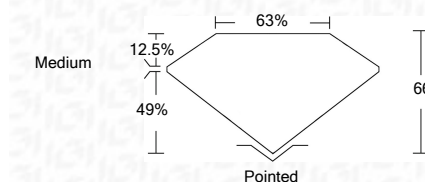
1.05 CARAT

Color Grade

G

Clarity Grade

VS 1



ADDITIONAL GRADING INFORMATION

Polish

EXCELLENT

Symmetry

EXCELLENT

Fluorescence

NONE

Inscription(s)

LABGROWN IGI LG533284973

Comments: This Laboratory Grown Diamond was created by Chemical Vapor Deposition (CVD) growth process and may include post-growth treatment.
Type IIa

June 10, 2022

IGI Report Number

LG533284973

Description

**LABORATORY GROWN
DIAMOND**

Shape and Cutting Style

**CUT CORNERED
RECTANGULAR MODIFIED
BRILLIANT**

Measurements

7.38 X 4.88 X 3.22 MM

GRADING RESULTS

Carat Weight

1.05 CARAT

Color Grade

G

Clarity Grade

VS 1

ADDITIONAL GRADING INFORMATION

Polish

EXCELLENT

Symmetry

EXCELLENT

Fluorescence

NONE

Inscription(s)

LABGROWN IGI LG533284973

Comments: This Laboratory Grown Diamond was created by Chemical Vapor Deposition (CVD) growth process and may include post-growth treatment.
Type IIa



IGI

IGI Report No. LG533284973	1.05 CARAT	G	VS 1	63%	Medium	Pointed	EXCELLENT	EXCELLENT	NONE	LABGROWN IGI LG533284973	Comments:
CUT CORNERED RECT. MODIFIED BRILLIANT	7.38 X 4.88 X 3.22 MM										This Laboratory Grown Diamond was created by Chemical Vapor Deposition (CVD) growth process and may include post-growth treatment. Type IIa
Color Grade	Clarity Grade	Depth	Table	Girdle	Culet	Polish	Symmetry	Fluorescence	Inscription(s)		

