



ELECTRONIC COPY

LABORATORY GROWN DIAMOND REPORT

LG537249376

July 29, 2022
IGI Report Number LG537249376

Description LABORATORY GROWN DIAMOND
Shape and Cutting Style ROUND BRILLIANT
Measurements 8.94 - 8.99 X 5.38 MM

GRADING RESULTS

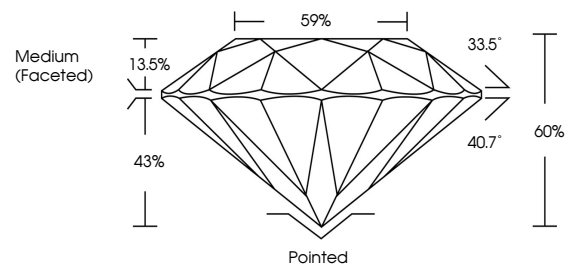
Carat Weight 2.65 CARATS
Color Grade H
Clarity Grade VS 1
Cut Grade IDEAL

ADDITIONAL GRADING INFORMATION

Polish EXCELLENT
Symmetry EXCELLENT
Fluorescence NONE
Inscription(s) LABGROWN IGI LG537249376

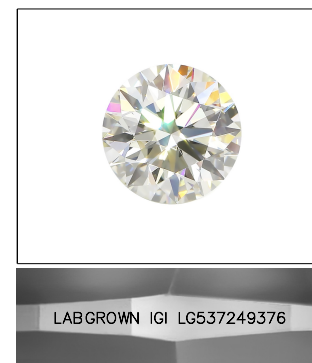
Comments: HEARTS & ARROWS
This Laboratory Grown Diamond was created by Chemical Vapor Deposition (CVD) growth process and may include post-growth treatment. Type IIa

PROPORTIONS

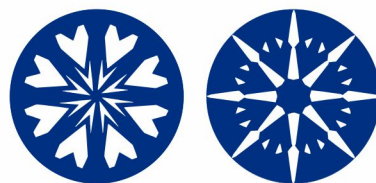


GRADING SCALES

Table showing Color Grading Scale (CL to LT) and Clarity (10x) Grading Scale (FL to I).



LASERSCRIBE SM Sample Image Used



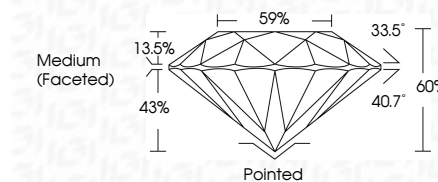
www.igi.org

July 29, 2022
IGI Report Number LG537249376
Description LABORATORY GROWN DIAMOND

Shape and Cutting Style ROUND BRILLIANT
Measurements 8.94 - 8.99 X 5.38 MM

GRADING RESULTS

Carat Weight 2.65 CARATS
Color Grade H
Clarity Grade VS 1
Cut Grade IDEAL



ADDITIONAL GRADING INFORMATION

Polish EXCELLENT
Symmetry EXCELLENT
Fluorescence NONE
Inscription(s) LABGROWN IGI LG537249376

Comments: HEARTS & ARROWS
This Laboratory Grown Diamond was created by Chemical Vapor Deposition (CVD) growth process and may include post-growth treatment. Type IIa



Summary table of diamond specifications: Carat Weight (2.65 CARATS), Color Grade (H), Clarity Grade (VS 1), Cut Grade (IDEAL), Depth (60%), Table (59%), Girdle (Medium (Faceted)), Polish (Excellent), Symmetry (Excellent), Fluorescence (None), Inscription(s) (LABGROWN IGI LG537249376).