



**ELECTRONIC COPY**

**LABORATORY GROWN DIAMOND REPORT**

LG538289444

August 9, 2022  
IGI Report Number **LG538289444**

Description **LABORATORY GROWN  
DIAMOND**  
Shape and Cutting Style **ROUND BRILLIANT**  
Measurements **8.22 - 8.25 X 5.14 MM**

**GRADING RESULTS**

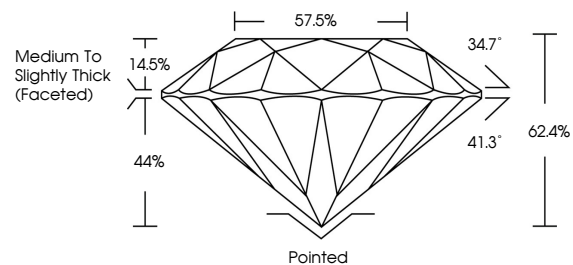
Carat Weight **2.16 CARATS**  
Color Grade **H**  
Clarity Grade **VS 1**  
Cut Grade **IDEAL**

**ADDITIONAL GRADING INFORMATION**

Polish **EXCELLENT**  
Symmetry **EXCELLENT**  
Fluorescence **NONE**  
Inscription(s) **LABGROWN IGI LG538289444**

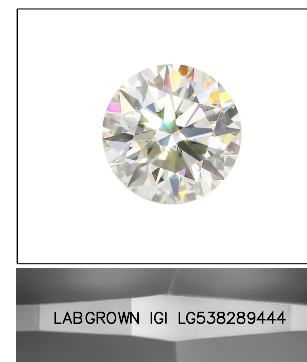
Comments: HEARTS & ARROWS  
This Laboratory Grown Diamond was created by  
Chemical Vapor Deposition (CVD) growth process and  
may include post-growth treatment.  
Type IIa

**PROPORTIONS**



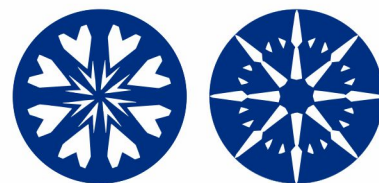
**GRADING SCALES**

|                                   |                                    |                                   |                              |                      |              |
|-----------------------------------|------------------------------------|-----------------------------------|------------------------------|----------------------|--------------|
| COLOR<br>GRADING<br>SCALE         | CL                                 | NC                                | FT                           | VLT                  | LT           |
|                                   | COLORLESS<br>D-F                   | NEAR<br>COLORLESS<br>G-J          | FAINT<br>K-M                 | VERY LIGHT<br>N-R    | LIGHT<br>S-Z |
| CLARITY (10x)<br>GRADING<br>SCALE | FL                                 | VVS                               | VS                           | SI                   | I            |
|                                   | FLAWLESS<br>INTERNALLY<br>FLAWLESS | VERY VERY<br>SLIGHTLY<br>INCLUDED | VERY<br>SLIGHTLY<br>INCLUDED | SLIGHTLY<br>INCLUDED | INCLUDED     |



**LASERSCRIBE<sup>SM</sup>**

Sample Image Used



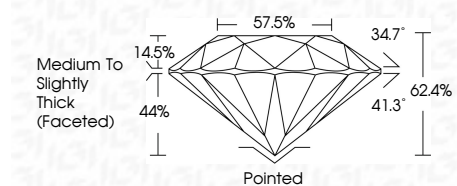
www.igi.org

August 9, 2022  
IGI Report Number **LG538289444**  
Description **LABORATORY GROWN  
DIAMOND**

Shape and Cutting Style **ROUND BRILLIANT**  
Measurements **8.22 - 8.25 X 5.14 MM**

**GRADING RESULTS**

Carat Weight **2.16 CARATS**  
Color Grade **H**  
Clarity Grade **VS 1**  
Cut Grade **IDEAL**



**ADDITIONAL GRADING INFORMATION**

Polish **EXCELLENT**  
Symmetry **EXCELLENT**  
Fluorescence **NONE**  
Inscription(s) **LABGROWN IGI LG538289444**

Comments: HEARTS & ARROWS  
This Laboratory Grown Diamond was created by  
Chemical Vapor Deposition (CVD) growth process and may include  
post-growth treatment.  
Type IIa



|                           |                           |                       |             |               |           |       |       |                                    |         |           |           |              |                          |
|---------------------------|---------------------------|-----------------------|-------------|---------------|-----------|-------|-------|------------------------------------|---------|-----------|-----------|--------------|--------------------------|
| August 9, 2022            | IGI Report No LG538289444 | 2.16 CARATS           | H           | VS 1          | IDEAL     | 62.4% | 57.5% | Medium To Slightly Thick (Faceted) | Pointed | EXCELLENT | EXCELLENT | NONE         | LABGROWN IGI LG538289444 |
| IGI Report No LG538289444 | ROUND BRILLIANT           | 8.22 - 8.25 X 5.14 MM | Color Grade | Clarity Grade | Cut Grade | Depth | Table | Grade                              | Culet   | Polish    | Symmetry  | Fluorescence | Inscription(s)           |

**Comments:**  
HEARTS & ARROWS  
This Laboratory Grown Diamond was  
created by Chemical Vapor Deposition  
(CVD) growth process and may include  
post-growth treatment.  
Type IIa