

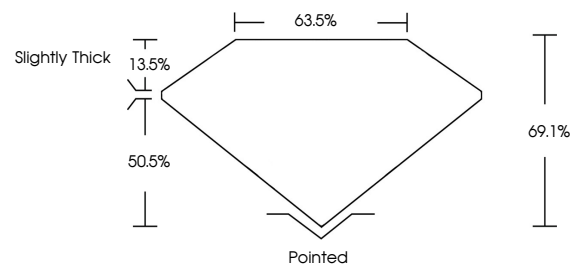


ELECTRONIC COPY

LABORATORY GROWN DIAMOND REPORT

LG539204844

PROPORTIONS



GRADING SCALES

Table with 5 columns for Color Grading Scale (CL to LT) and Clarity (10x) Grading Scale (FL to I).

July 23, 2022
IGI Report Number: LG539204844
Description: LABORATORY GROWN DIAMOND
Shape and Cutting Style: CUT CORNERED RECTANGULAR MODIFIED BRILLIANT
Measurements: 8.77 X 5.99 X 4.14 MM

July 23, 2022
IGI Report Number: LG539204844
Description: LABORATORY GROWN DIAMOND
Shape and Cutting Style: CUT CORNERED RECTANGULAR MODIFIED BRILLIANT
Measurements: 8.77 X 5.99 X 4.14 MM

GRADING RESULTS

Carat Weight: 2.00 CARATS
Color Grade: G
Clarity Grade: VS 1

GRADING RESULTS
Carat Weight: 2.00 CARATS
Color Grade: G
Clarity Grade: VS 1

ADDITIONAL GRADING INFORMATION

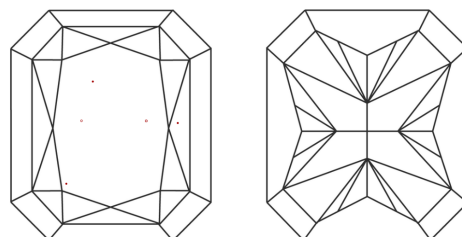
Polish: EXCELLENT
Symmetry: EXCELLENT
Fluorescence: NONE
Inscription(s): LABGROWN IGI LG539204844

ADDITIONAL GRADING INFORMATION
Polish: EXCELLENT
Symmetry: EXCELLENT
Fluorescence: NONE
Inscription(s): LABGROWN IGI LG539204844

Comments: This Laboratory Grown Diamond was created by Chemical Vapor Deposition (CVD) growth process and may include post-growth treatment. Type IIa

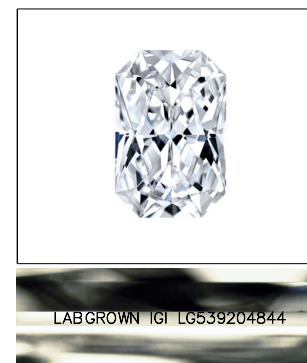
Comments: This Laboratory Grown Diamond was created by Chemical Vapor Deposition (CVD) growth process and may include post-growth treatment. Type IIa

CLARITY CHARACTERISTICS

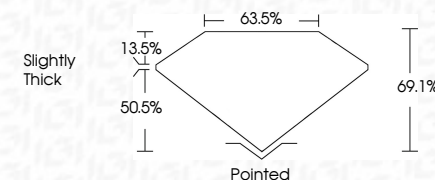


KEY TO SYMBOLS

Red symbols indicate internal characteristics.
Green symbols indicate external characteristics.



LASERSCRIBE SM
Sample Image Used



ADDITIONAL GRADING INFORMATION
Polish: EXCELLENT
Symmetry: EXCELLENT
Fluorescence: NONE
Inscription(s): LABGROWN IGI LG539204844



Summary box containing report details: July 23, 2022, IGI Report No. LG539204844, CUT CORNERED RECT. MODIFIED, 8.77 X 5.99 X 4.14 MM, Carat Weight 2.00 CARATS, Color Grade G, Clarity Grade VS 1, Depth 69.1%, Table 63.5%, Girdle Slightly Thick, Culet Pointed, Polish EXCELLENT, Symmetry EXCELLENT, Fluorescence NONE, Inscription(s) LABGROWN IGI LG539204844, Comments: This Laboratory Grown Diamond was created by Chemical Vapor Deposition (CVD) growth process and may include post-growth treatment. Type IIa