



ELECTRONIC COPY

LABORATORY GROWN DIAMOND REPORT

LG539245422

August 30, 2022
IGI Report Number **LG539245422**

Description **LABORATORY GROWN
DIAMOND**
Shape and Cutting Style **ROUND BRILLIANT**
Measurements **8.53 - 8.58 X 5.28 MM**

GRADING RESULTS

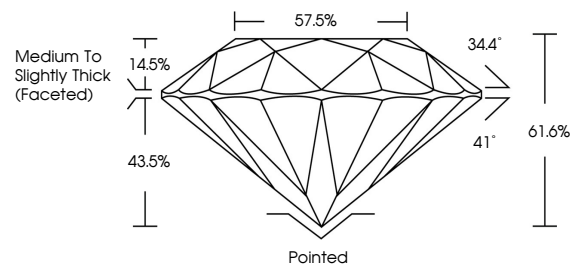
Carat Weight **2.37 CARATS**
Color Grade **H**
Clarity Grade **VS 1**
Cut Grade **IDEAL**

ADDITIONAL GRADING INFORMATION

Polish **EXCELLENT**
Symmetry **EXCELLENT**
Fluorescence **NONE**
Inscription(s) **LABGROWN IGI LG539245422**

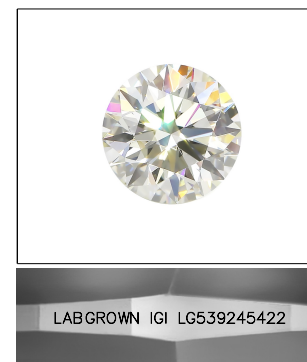
Comments: HEARTS & ARROWS
This Laboratory Grown Diamond was created by
Chemical Vapor Deposition (CVD) growth process and
may include post-growth treatment.
Type IIa

PROPORTIONS



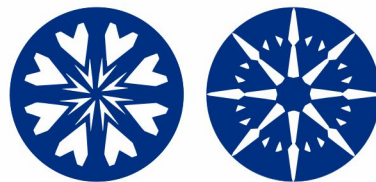
GRADING SCALES

| | | | | | |
|-----------------------------|------------------------------|-----------------------------|------------------------|-------------------|-----------|
| COLOR GRADING SCALE | CL | NC | FT | VLT | LT |
| | COLORLESS D-F | NEAR COLORLESS G-J | FAINT K-M | VERY LIGHT N-R | LIGHT S-Z |
| CLARITY (10x) GRADING SCALE | FL | VVS | VS | SI | I |
| | FLAWLESS INTERNALLY FLAWLESS | VERY VERY SLIGHTLY INCLUDED | VERY SLIGHTLY INCLUDED | SLIGHTLY INCLUDED | INCLUDED |



LASERSCRIBE™

Sample Image Used



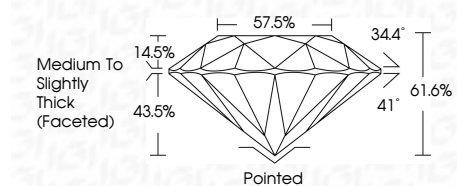
www.igi.org

August 30, 2022
IGI Report Number **LG539245422**
Description **LABORATORY GROWN
DIAMOND**

Shape and Cutting Style **ROUND BRILLIANT**
Measurements **8.53 - 8.58 X 5.28 MM**

GRADING RESULTS

Carat Weight **2.37 CARATS**
Color Grade **H**
Clarity Grade **VS 1**
Cut Grade **IDEAL**



ADDITIONAL GRADING INFORMATION

Polish **EXCELLENT**
Symmetry **EXCELLENT**
Fluorescence **NONE**
Inscription(s) **LABGROWN IGI LG539245422**

Comments: HEARTS & ARROWS
This Laboratory Grown Diamond was created by
Chemical Vapor Deposition (CVD) growth process and
may include post-growth treatment.
Type IIa



IGI

| | | | |
|-----------------|---------------------------|-----------------|--|
| August 30, 2022 | IGI Report No LG539245422 | 2.37 CARATS | H |
| ROUND BRILLIANT | 8.53 - 8.58 X 5.28 MM | VS 1 | IDEAL |
| Carat Weight | Color Grade | Clarity Grade | Cut Grade |
| 2.37 CARATS | H | VS 1 | IDEAL |
| | | 61.6% | 57.5% |
| | | 43.5% | 14.5% |
| | | 41° | 34.4° |
| | | Pointed | Medium To Slightly Thick (Faceted) |
| | | EXCELLENT | EXCELLENT |
| | | EXCELLENT | EXCELLENT |
| | | NONE | NONE |
| | | LABGROWN IGI | LG539245422 |
| | | HEARTS & ARROWS | The Laboratory Grown Diamond was created by Chemical Vapor Deposition (CVD) growth process and may include post-growth treatment. Type IIa |

