



ELECTRONIC COPY

LG547243054

Report verification at igi.org

LABORATORY GROWN DIAMOND REPORT

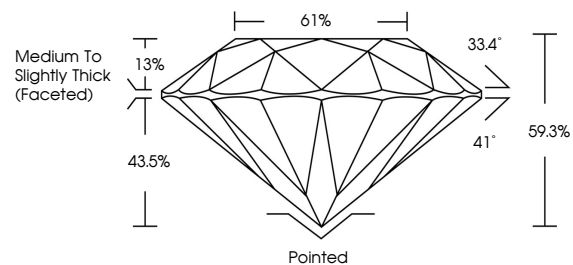
October 13, 2022
 IGI Report Number **LG547243054**
 Description **LABORATORY GROWN
DIAMOND**
 Shape and Cutting Style **ROUND BRILLIANT**
 Measurements **9.02 - 9.08 X 5.37 MM**
GRADING RESULTS
 Carat Weight **2.67 CARATS**
 Color Grade **H**
 Clarity Grade **VVS 2**
 Cut Grade **EXCELLENT**

ADDITIONAL GRADING INFORMATION

Polish **EXCELLENT**
 Symmetry **EXCELLENT**
 Fluorescence **NONE**
 Inscription(s) **LABGROWN IGI LG547243054**

Comments: HEARTS & ARROWS
 This Laboratory Grown Diamond was created by
 Chemical Vapor Deposition (CVD) growth process and
 may include post-growth treatment.
 Type IIa

PROPORTIONS



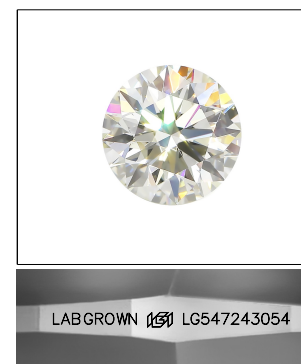
GRADING SCALES

CLARITY

IF	VVS ¹⁻²	VS ¹⁻²	SI ¹⁻²	I ¹⁻³
Internally Flawless	Very Very Slightly Included	Very Slightly Included	Slightly Included	Included

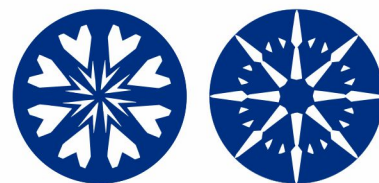
COLOR

D	E	F	G	H	I	J	Faint	Very Light	Light
---	---	---	---	---	---	---	-------	------------	-------



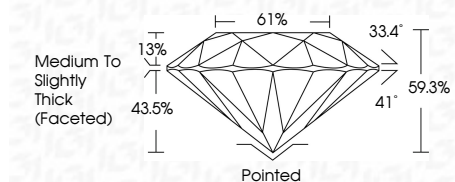
LASERSCRIBESM

Sample Image Used



www.igi.org

October 13, 2022
 IGI Report Number **LG547243054**
 Description **LABORATORY GROWN
DIAMOND**
 Shape and Cutting Style **ROUND BRILLIANT**
 Measurements **9.02 - 9.08 X 5.37 MM**
GRADING RESULTS
 Carat Weight **2.67 CARATS**
 Color Grade **H**
 Clarity Grade **VVS 2**
 Cut Grade **EXCELLENT**



ADDITIONAL GRADING INFORMATION

Polish **EXCELLENT**
 Symmetry **EXCELLENT**
 Fluorescence **NONE**
 Inscription(s) **LABGROWN IGI LG547243054**

Comments: HEARTS & ARROWS
 This Laboratory Grown Diamond was created by
 Chemical Vapor Deposition (CVD) growth process and
 may include post-growth treatment.
 Type IIa



IGI

October 13, 2022
 IGI Report No LG547243054
ROUND BRILLIANT
 9.02 - 9.08 X 5.37 MM
 Carat Weight **2.67 CARATS**
 Color Grade **H**
 Clarity Grade **VVS 2**
 Cut Grade **EXCELLENT**
 Depth **59.3%**
 Table **61%**
 Girdle **Medium To Slightly Thick (Faceted)**
 Culet **Pointed**
 Polish **EXCELLENT**
 Symmetry **EXCELLENT**
 Fluorescence **NONE**
 Inscription(s) **LABGROWN IGI LG547243054**
Comments:
HEARTS & ARROWS
 This Laboratory Grown Diamond was created by Chemical Vapor Deposition (CVD) growth process and may include post-growth treatment.
 Type IIa

