



ELECTRONIC COPY

LG549211711

Report verification at igi.org

LABORATORY GROWN DIAMOND REPORT

November 2, 2022
IGI Report Number **LG549211711**
Description **LABORATORY GROWN
DIAMOND**
Shape and Cutting Style **CUSHION MODIFIED BRILLIANT**
Measurements **9.13 X 7.94 X 5.34 MM**

GRADING RESULTS

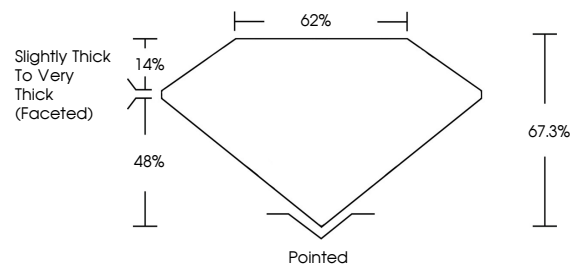
Carat Weight **3.01 CARATS**
Color Grade **G**
Clarity Grade **VS 2**
Cut Grade **VERY GOOD**

ADDITIONAL GRADING INFORMATION

Polish **EXCELLENT**
Symmetry **VERY GOOD**
Fluorescence **NONE**
Inscription(s) **LABGROWN (IGI) LG549211711**

Comments: This Laboratory Grown Diamond was created by Chemical Vapor Deposition (CVD) growth process and may include post-growth treatment. Type IIa

PROPORTIONS



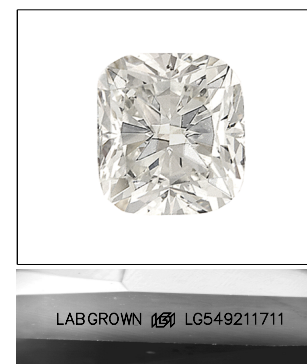
GRADING SCALES

CLARITY

IF	VVS ¹⁻²	VS ¹⁻²	SI ¹⁻²	I ¹⁻³
Internally Flawless	Very Very Slightly Included	Very Slightly Included	Slightly Included	Included

COLOR

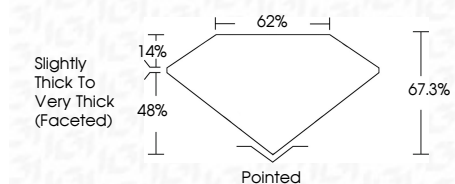
D	E	F	G	H	I	J	Faint	Very Light	Light
---	---	---	---	---	---	---	-------	------------	-------



LASERSCRIBESM

Sample Image Used

November 2, 2022
IGI Report Number **LG549211711**
Description **LABORATORY GROWN
DIAMOND**
Shape and Cutting Style **CUSHION MODIFIED
BRILLIANT**
Measurements **9.13 X 7.94 X 5.34 MM**



ADDITIONAL GRADING INFORMATION

Polish **EXCELLENT**
Symmetry **VERY GOOD**
Fluorescence **NONE**
Inscription(s) **LABGROWN (IGI) LG549211711**

Comments: This Laboratory Grown Diamond was created by Chemical Vapor Deposition (CVD) growth process and may include post-growth treatment. Type IIa



IGI

November 2, 2022
IGI Report No. LG549211711
CUSHION MODIFIED BRILLIANT
9.13 X 7.94 X 5.34 MM
Carat Weight **3.01 CARATS**
Color Grade **G**
Clarity Grade **VS 2**
Cut Grade **VERY GOOD**
Depth **67.3%**
Table **62%**
Girdle **Slightly Thick To Very Thick (Faceted)**
Culet **Pointed**
Polish **EXCELLENT**
Symmetry **VERY GOOD**
Fluorescence **NONE**
Inscriptions(s) **LABGROWN (IGI) LG549211711**

Comments: This Laboratory Grown Diamond was created by Chemical Vapor Deposition (CVD) growth process and may include post-growth treatment. Type IIa