



ELECTRONIC COPY

LABORATORY GROWN DIAMOND REPORT

LG559293179

LABORATORY GROWN DIAMOND REPORT

LABORATORY GROWN DIAMOND REPORT

December 28, 2022
IGI Report Number LG559293179

Description LABORATORY GROWN DIAMOND
Shape and Cutting Style ROUND BRILLIANT
Measurements 9.11 - 9.14 X 5.54 MM

GRADING RESULTS

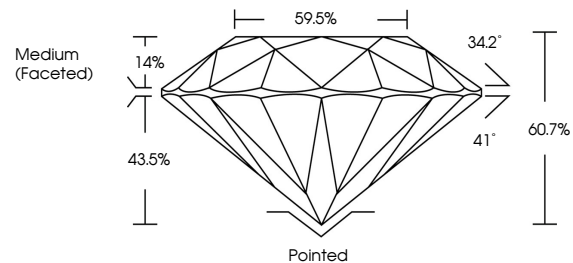
Carat Weight 2.84 CARATS
Color Grade H
Clarity Grade VS 2
Cut Grade IDEAL

ADDITIONAL GRADING INFORMATION

Polish EXCELLENT
Symmetry EXCELLENT
Fluorescence NONE
Inscription(s) LABGROWN (IGI) LG559293179

Comments: HEARTS & ARROWS
This Laboratory Grown Diamond was created by Chemical Vapor Deposition (CVD) growth process and may include post-growth treatment. Type IIa

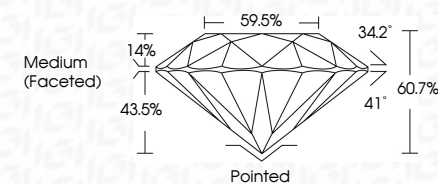
PROPORTIONS



GRADING SCALES

Table with 2 rows and 5 columns defining color and clarity grading scales. Color scale: CL (Colorless D-F), NC (Near Colorless G-J), FT (Faint K-M), VLT (Very Light N-R), LT (Light S-Z). Clarity scale: FL (Flawless Internally Flawless), IF (Internally Flawless), VVS (Very Very Slightly Included), VS (Very Slightly Included), SI (Slightly Included), I (Included).

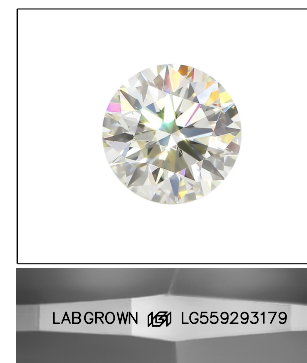
December 28, 2022
IGI Report Number LG559293179
Description LABORATORY GROWN DIAMOND
Shape and Cutting Style ROUND BRILLIANT
Measurements 9.11 - 9.14 X 5.54 MM
GRADING RESULTS
Carat Weight 2.84 CARATS
Color Grade H
Clarity Grade VS 2
Cut Grade IDEAL



ADDITIONAL GRADING INFORMATION

Polish EXCELLENT
Symmetry EXCELLENT
Fluorescence NONE
Inscription(s) LABGROWN (IGI) LG559293179

Comments: HEARTS & ARROWS
This Laboratory Grown Diamond was created by Chemical Vapor Deposition (CVD) growth process and may include post-growth treatment. Type IIa



LASERSCRIBE SM

Sample Image Used



www.igi.org



Summary table of diamond specifications: Report No. LG559293179, Round Brilliant, 9.11 - 9.14 X 5.54 MM, 2.84 Carats, Color H, Clarity VS 2, Cut Ideal, Depth 60.7%, Table 59.5%, Grade Medium (Faceted), Culet Pointed, Polish Excellent, Symmetry Excellent, Fluorescence None, Inscription(s) LABGROWN (IGI) LG559293179. Comments: Hearts & Arrows Diamond was created by Chemical Vapor Deposition (CVD) growth process and may include post-growth treatment. Type IIa