



ELECTRONIC COPY

LABORATORY GROWN DIAMOND REPORT

LG559294162

January 6, 2023
IGI Report Number LG559294162

Description LABORATORY GROWN DIAMOND
Shape and Cutting Style ROUND BRILLIANT
Measurements 9.14 - 9.17 X 5.59 MM

GRADING RESULTS

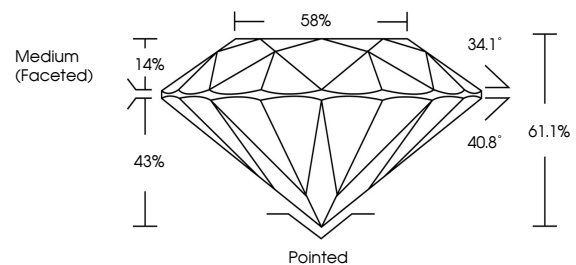
Carat Weight 2.89 CARATS
Color Grade H
Clarity Grade VS 1
Cut Grade IDEAL

ADDITIONAL GRADING INFORMATION

Polish EXCELLENT
Symmetry EXCELLENT
Fluorescence NONE
Inscription(s) LABGROWN (LGI) LG559294162

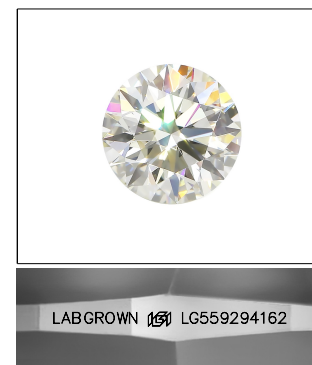
Comments: HEARTS & ARROWS
This Laboratory Grown Diamond was created by Chemical Vapor Deposition (CVD) growth process and may include post-growth treatment.
Type IIa

PROPORTIONS



GRADING SCALES

Table with 2 rows and 5 columns showing color grading scales (CL, NC, FT, VLT, LT) and clarity grading scales (FL, IF, VVS, VS, SI, I).

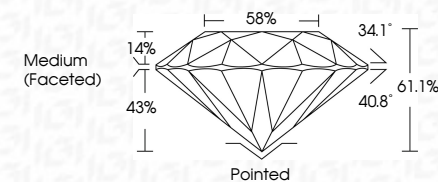


LASERSCRIBE SM
Sample Image Used



www.igi.org

January 6, 2023
IGI Report Number LG559294162
Description LABORATORY GROWN DIAMOND
Shape and Cutting Style ROUND BRILLIANT
Measurements 9.14 - 9.17 X 5.59 MM
GRADING RESULTS
Carat Weight 2.89 CARATS
Color Grade H
Clarity Grade VS 1
Cut Grade IDEAL



ADDITIONAL GRADING INFORMATION

Polish EXCELLENT
Symmetry EXCELLENT
Fluorescence NONE
Inscription(s) LABGROWN (LGI) LG559294162

Comments: HEARTS & ARROWS
This Laboratory Grown Diamond was created by Chemical Vapor Deposition (CVD) growth process and may include post-growth treatment.
Type IIa



Summary table of diamond specifications: IGI Report No. LG559294162, ROUND BRILLIANT, 9.14 - 9.17 X 5.59 MM, 2.89 CARATS, H, VS 1, IDEAL, 61.1%, 58%, Medium (Faceted), Pointed, EXCELLENT, EXCELLENT, NONE, LABGROWN (LGI) LG559294162.

Comments: HEARTS & ARROWS
This Laboratory Grown Diamond was created by Chemical Vapor Deposition (CVD) growth process and may include post-growth treatment.
Type IIa