



ELECTRONIC COPY

LG563224060

Report verification at igi.org

LABORATORY GROWN DIAMOND REPORT

February 7, 2023
IGI Report Number LG563224060
Description LABORATORY GROWN DIAMOND
Shape and Cutting Style ROUND BRILLIANT
Measurements 9.20 - 9.26 X 5.53 MM

GRADING RESULTS

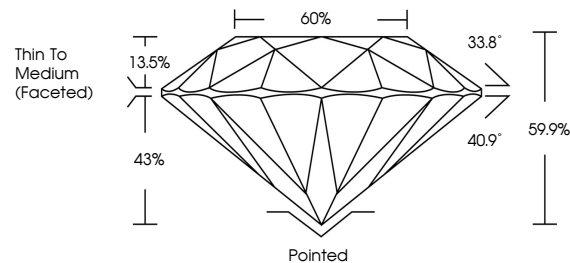
Carat Weight 2.87 CARATS
Color Grade H
Clarity Grade VVS 2
Cut Grade EXCELLENT

ADDITIONAL GRADING INFORMATION

Polish EXCELLENT
Symmetry EXCELLENT
Fluorescence NONE
Inscription(s) IGI LG563224060

Comments: HEARTS & ARROWS
This Laboratory Grown Diamond was created by Chemical Vapor Deposition (CVD) growth process and may include post-growth treatment. Type IIa

PROPORTIONS



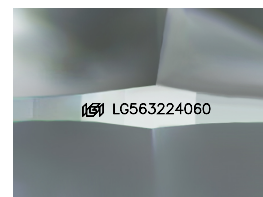
GRADING SCALES

CLARITY

Table mapping clarity grades: IF (Internally Flawless), VVS 1-2 (Very Very Slightly Included), VS 1-2 (Very Slightly Included), SI 1-2 (Slightly Included), I 1-3 (Included)

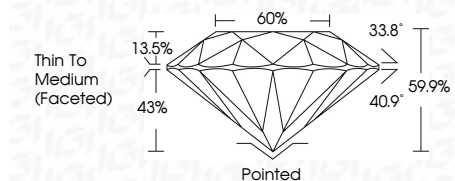
COLOR

Table mapping color grades: D, E, F, G, H, I, J, Faint, Very Light, Light



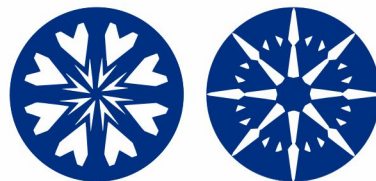
Sample Image Used

February 7, 2023
IGI Report Number LG563224060
Description LABORATORY GROWN DIAMOND
Shape and Cutting Style ROUND BRILLIANT
Measurements 9.20 - 9.26 X 5.53 MM
GRADING RESULTS
Carat Weight 2.87 CARATS
Color Grade H
Clarity Grade VVS 2
Cut Grade EXCELLENT



ADDITIONAL GRADING INFORMATION

Polish EXCELLENT
Symmetry EXCELLENT
Fluorescence NONE
Inscription(s) IGI LG563224060
Comments: HEARTS & ARROWS
This Laboratory Grown Diamond was created by Chemical Vapor Deposition (CVD) growth process and may include post-growth treatment. Type IIa



IGI

Summary table of report details: February 7, 2023, IGI Report No LG563224060, ROUND BRILLIANT, 9.20 - 9.26 X 5.53 MM, 2.87 CARATS, H, VVS 2, EXCELLENT, 60%, 43%, Thin To Medium (Faceted), Pointed, EXCELLENT, EXCELLENT, NONE, IGI LG563224060

Comments: HEARTS & ARROWS
This Laboratory Grown Diamond was created by Chemical Vapor Deposition (CVD) growth process and may include post-growth treatment. Type IIa