



**INTERNATIONAL
GEMOLOGICAL
INSTITUTE**

ELECTRONIC COPY

**LABORATORY GROWN
DIAMOND REPORT**

LG566336600

**IGI LABORATORY GROWN
DIAMOND ID REPORT**

February 27, 2023
IGI Report Number **LG566336600**
ROUND BRILLIANT
5.09 - 5.11 X 3.15 MM
Carat Weight 0.50 CARAT
Color Grade E
Clarity Grade SI 2
Cut Grade IDEAL
Polish EXCELLENT
Symmetry EXCELLENT
Fluorescence NONE
Inscription(s) LG566336600

LABORATORY GROWN DIAMOND REPORT

IGI LABORATORY GROWN DIAMOND IDENTIFICATION REPORT

February 27, 2023
IGI Report Number LG566336600
Description LABORATORY GROWN DIAMOND
Shape and Cutting Style ROUND BRILLIANT
Measurements 5.09 - 5.11 X 3.15 MM



Sample Image Used

GRADING RESULTS

Carat Weight 0.50 CARAT
Color Grade E
Clarity Grade SI 2
Cut Grade IDEAL

ADDITIONAL GRADING INFORMATION

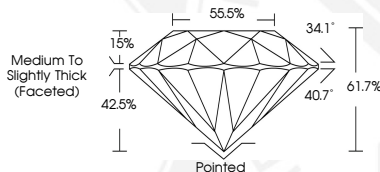
Polish EXCELLENT
Symmetry EXCELLENT
Fluorescence NONE
Inscription(s) LG566336600

Comments: This Laboratory Grown Diamond was created by Chemical Vapor Deposition (CVD) growth process and may include post-growth treatment.
Type IIa

**IGI LABORATORY GROWN
DIAMOND ID REPORT**

February 27, 2023
IGI Report Number **LG566336600**
ROUND BRILLIANT
5.09 - 5.11 X 3.15 MM
Carat Weight 0.50 CARAT
Color Grade E
Clarity Grade SI 2
Cut Grade IDEAL
Polish EXCELLENT
Symmetry EXCELLENT
Fluorescence NONE
Inscription(s) LG566336600

Comments: This Laboratory Grown Diamond was created by Chemical Vapor Deposition (CVD) growth process and may include post-growth treatment.Type IIa



THIS DOCUMENT WAS PRODUCED WITH THE FOLLOWING SECURITY MEASURES: SPECIAL DOCUMENT PAPER, INK SCREENS, WATERMARK, BACKGROUND DESIGN, HOLOGRAM AND OTHER SECURITY FEATURES NOT LISTED AND DO EXCEED DOCUMENT SECURITY INDUSTRY GUIDELINES.

For terms & conditions and to verify this report, please visit www.igi.org