



**INTERNATIONAL
GEMOLOGICAL
INSTITUTE**

ELECTRONIC COPY

**LABORATORY GROWN
DIAMOND REPORT**

LG572330607

**IGI LABORATORY GROWN
DIAMOND ID REPORT**

March 28, 2023
IGI Report Number **LG572330607**
**CUT CORNERED RECTANGULAR
MODIFIED BRILLIANT**
4.77 X 4.08 X 2.93 MM

Carat Weight 0.51 CARAT
Color Grade FANCY VIVID PINK
Clarity Grade SI 2
Polish VERY GOOD
Symmetry VERY GOOD
Fluorescence SLIGHT
Inscription(s) LG572330607

Comments: This Laboratory Grown Diamond was created by Chemical Vapor Deposition (CVD) growth process. Indications of post-growth treatment. Secondary color: Purple

LABORATORY GROWN DIAMOND REPORT

IGI LABORATORY GROWN DIAMOND IDENTIFICATION REPORT

March 28, 2023
IGI Report Number LG572330607
Description LABORATORY GROWN DIAMOND
Shape and Cutting Style CUT CORNERED RECTANGULAR MODIFIED BRILLIANT
Measurements 4.77 X 4.08 X 2.93 MM

GRADING RESULTS

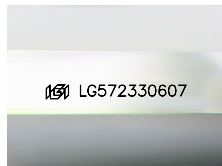
Carat Weight 0.51 CARAT
Color Grade FANCY VIVID PINK
Clarity Grade SI 2

ADDITIONAL GRADING INFORMATION

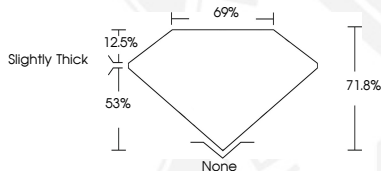
Polish VERY GOOD
Symmetry VERY GOOD
Fluorescence SLIGHT
Inscription(s) LG572330607

Comments: This Laboratory Grown Diamond was created by Chemical Vapor Deposition (CVD) growth process. Indications of post-growth treatment.

Secondary color: Purple



Sample Image Used



**IGI LABORATORY GROWN
DIAMOND ID REPORT**

March 28, 2023
IGI Report Number **LG572330607**
**CUT CORNERED RECTANGULAR
MODIFIED BRILLIANT**
4.77 X 4.08 X 2.93 MM

Carat Weight 0.51 CARAT
Color Grade FANCY VIVID PINK
Clarity Grade SI 2
Polish VERY GOOD
Symmetry VERY GOOD
Fluorescence SLIGHT
Inscription(s) LG572330607

Comments: This Laboratory Grown Diamond was created by Chemical Vapor Deposition (CVD) growth process. Indications of post-growth treatment. Secondary color: Purple

THIS DOCUMENT WAS PRODUCED WITH THE FOLLOWING SECURITY MEASURES: SPECIAL DOCUMENT PAPER, INK SCREENS, WATERMARK, BACKGROUND DESIGN, HOLOGRAM AND OTHER SECURITY FEATURES NOT LISTED AND DO EXCEED DOCUMENT SECURITY INDUSTRY GUIDELINES.

For terms & conditions and to verify this report, please visit www.igi.org