



ELECTRONIC COPY

LABORATORY GROWN DIAMOND REPORT

LG573302111

Report verification at igi.org

LABORATORY GROWN
DIAMOND REPORT

LABORATORY GROWN DIAMOND REPORT

LABORATORY GROWN DIAMOND REPORT

March 31, 2023
IGI Report Number **LG573302111**

Description **LABORATORY GROWN
DIAMOND**

Shape and Cutting Style **MARQUISE BRILLIANT**

Measurements **14.03 X 7.37 X 4.41 MM**

GRADING RESULTS

Carat Weight **2.61 CARATS**

Color Grade **G**

Clarity Grade **VS 2**

ADDITIONAL GRADING INFORMATION

Polish **EXCELLENT**

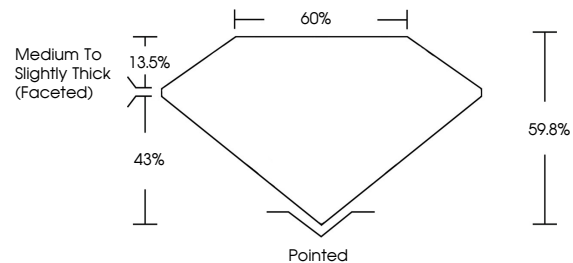
Symmetry **EXCELLENT**

Fluorescence **NONE**

Inscription(s) **IGI LG573302111**

Comments: This Laboratory Grown Diamond was created by Chemical Vapor Deposition (CVD) growth process and may include post-growth treatment. Type IIa

PROPORTIONS



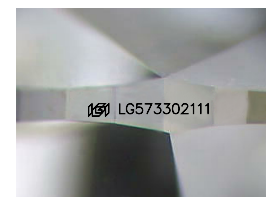
GRADING SCALES

CLARITY

IF	VVS ¹⁻²	VS ¹⁻²	SI ¹⁻²	I ¹⁻³
Internally Flawless	Very Very Slightly Included	Very Slightly Included	Slightly Included	Included

COLOR

D	E	F	G	H	I	J	Faint	Very Light	Light
---	---	---	---	---	---	---	-------	------------	-------



Sample Image Used

March 31, 2023
IGI Report Number **LG573302111**
Description **LABORATORY GROWN
DIAMOND**

Shape and Cutting Style **MARQUISE BRILLIANT**

Measurements **14.03 X 7.37 X 4.41 MM**

GRADING RESULTS

Carat Weight **2.61 CARATS**

Color Grade **G**

Clarity Grade **VS 2**

ADDITIONAL GRADING INFORMATION

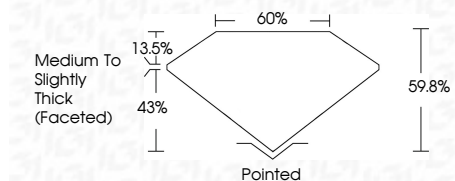
Polish **EXCELLENT**

Symmetry **EXCELLENT**

Fluorescence **NONE**

Inscription(s) **IGI LG573302111**

Comments: This Laboratory Grown Diamond was created by Chemical Vapor Deposition (CVD) growth process and may include post-growth treatment. Type IIa



IGI

March 31, 2023
IGI Report No LG573302111
MARQUISE BRILLIANT
14.03 X 7.37 X 4.41 MM
Carat Weight **2.61 CARATS**
Color Grade **G**
Clarity Grade **VS 2**
Depth **60%**
Table **43%**
Girdle **Medium to Slightly Thick (Faceted)**
Culet **Pointed**
Polish **EXCELLENT**
Symmetry **EXCELLENT**
Fluorescence **NONE**
Inscription(s) **IGI LG573302111**

Comments: This Laboratory Grown Diamond was created by Chemical Vapor Deposition (CVD) growth process and may include post-growth treatment. Type IIa