



ELECTRONIC COPY

LG573303329

Report verification at igi.org

LABORATORY GROWN DIAMOND REPORT

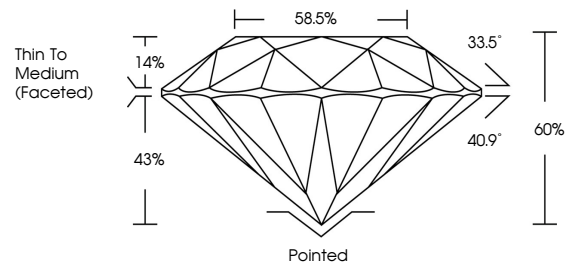
April 13, 2023
IGI Report Number LG573303329
Description LABORATORY GROWN DIAMOND
Shape and Cutting Style ROUND BRILLIANT
Measurements 9.05 - 9.10 X 5.44 MM
GRADING RESULTS
Carat Weight 2.72 CARATS
Color Grade H
Clarity Grade VS 1
Cut Grade IDEAL

ADDITIONAL GRADING INFORMATION

Polish EXCELLENT
Symmetry EXCELLENT
Fluorescence NONE
Inscription(s) IGI LG573303329

Comments: This Laboratory Grown Diamond was created by Chemical Vapor Deposition (CVD) growth process and may include post-growth treatment. Type IIa

PROPORTIONS



GRADING SCALES

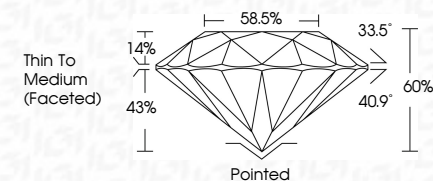
CLARITY

Table with 5 columns: IF, VVS 1-2, VS 1-2, SI 1-2, I 1-3. Row 1: Internally Flawless, Very Very Slightly Included, Very Slightly Included, Slightly Included, Included.

COLOR

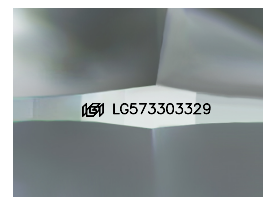
Table with 7 columns: D, E, F, G, H, I, J, Faint, Very Light, Light.

April 13, 2023
IGI Report Number LG573303329
Description LABORATORY GROWN DIAMOND
Shape and Cutting Style ROUND BRILLIANT
Measurements 9.05 - 9.10 X 5.44 MM
GRADING RESULTS
Carat Weight 2.72 CARATS
Color Grade H
Clarity Grade VS 1
Cut Grade IDEAL



ADDITIONAL GRADING INFORMATION

Polish EXCELLENT
Symmetry EXCELLENT
Fluorescence NONE
Inscription(s) IGI LG573303329
Comments: This Laboratory Grown Diamond was created by Chemical Vapor Deposition (CVD) growth process and may include post-growth treatment. Type IIa



Sample Image Used



IGI

April 13, 2023
IGI Report No LG573303329
ROUND BRILLIANT
9.05 - 9.10 X 5.44 MM
2.72 CARATS H
Color Grade VS 1 IDEAL
Clarity Grade VS 1 IDEAL
Depth 60%
Table 58.5%
Girdle Thin To Medium (Faceted)
Culet Pointed
Polish EXCELLENT
Symmetry EXCELLENT
Fluorescence NONE
Inscriptions(s) IGI LG573303329
Comments: This Laboratory Grown Diamond was created by Chemical Vapor Deposition (CVD) growth process and may include post-growth treatment. Type IIa