



IGI GEMOLOGICAL REPORT

IGI LABORATORY GROWN DIAMOND GRADING REPORT

9/20/2019

IGI Report Number **LG11336609**

Shape and Cutting Style **ROUND BRILLIANT**

Measurements **6.36 - 6.40 x 3.95 MM.**

GRADING RESULTS

Carat Weight **1.01 CARATS**

Color Grade **FANCY VIVID PINK**

Clarity Grade **VVS 2**

Cut Grade **VERY GOOD**

ADDITIONAL GRADING INFORMATION

Polish **GOOD**

Symmetry **VERY GOOD**

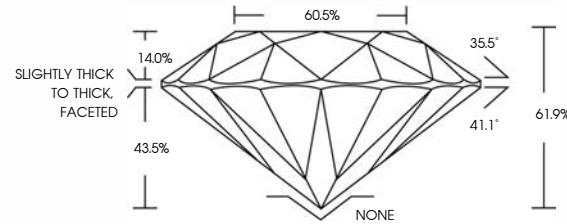
Fluorescence **VERY STRONG ORANGE**

Inscription(s) **LABGROWN IGI LG11336609**

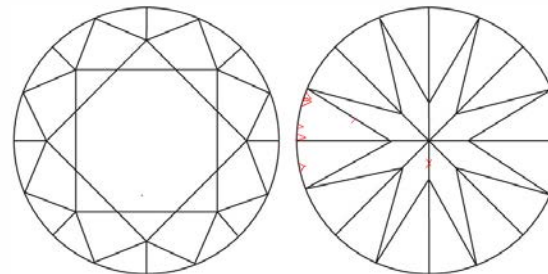
Comments: The laboratory grown diamond described above is classified as Type IIa.



ADDITIONAL INFORMATION



CLARITY CHARACTERISTICS



KEY TO SYMBOLS

Red symbols indicate internal characteristics.  
Green symbols indicate external characteristics.

**FACSIMILE**

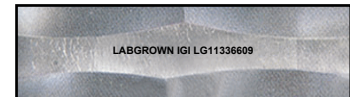
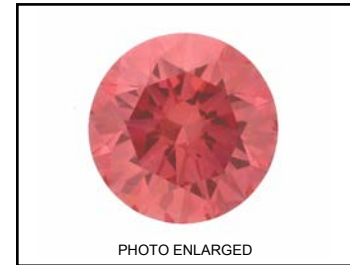
GRADING SCALES

COLOR GRADING SCALE	LIGHT TINT	FANCY LIGHT	FANCY	FANCY INTENSE	FANCY VIVID	
CLARITY (Ibs) GRADING SCALE	FL FLAWLESS INTERNALLY FLAWLESS	IF VERY VERY SLIGHTLY INCLUDED	VVS VERY VERY SLIGHTLY INCLUDED	VS VERY SLIGHTLY INCLUDED	SI SLIGHTLY INCLUDED	I INCLUDED

The laboratory grown diamond described in this Report ("Report") has been graded, tested, analyzed, examined and/or inscribed by International Gemological Institute (IGI). A laboratory grown diamond is one that has essentially the same chemical, physical and optical properties as a mined diamond, with the exception of being grown by man (a manufactured product). This is a manufactured (man-made) diamond produced by CVD (chemical vapor deposition) or by HPHT (high pressure high temperature) growth processes and may include post-growth treatments to alter the color. IGI employs and utilizes those techniques and equipment currently available to IGI, including, without limitation, 10X magnification, corrected triplet loupe, binocular microscope, master color comparison stones, non-contact-optical measuring device, Spectrophotometer and such other instruments and/or processes as deemed appropriate by IGI. In the case where diamond melee is set in a mounting, a random testing procedure, regarding the diamonds being of natural or laboratory created origin will be performed. This Report includes advanced security features. A duly accredited gemologist or jeweler can advise you with respect to the importance of and interrelationship between cut, color, clarity and carat weight.

**THIS REPORT IS NEITHER A GUARANTEE, VALUATION, NOR APPRAISAL OF THE GEMSTONE DESCRIBED HEREIN. PLEASE REVIEW THE LIMITATIONS AND RESTRICTIONS SET FORTH ONLINE. FOR ADDITIONAL INFORMATION, IMPORTANT LIMITATIONS AND DISCLAIMERS, PLEASE GO TO [WWW.IGI.ORG/TERMS.HTML](http://WWW.IGI.ORG/TERMS.HTML) OR CALL 1-888-BUY-IGIS.**

© INTERNATIONAL GEMOLOGICAL INSTITUTE, INC.



LASERSCRIBE<sup>SM</sup>  
Photo Illustration



The gemstone described in this Diamond Report ("Report") has been graded, tested, analyzed, examined and/or inscribed by International Gemological Institute (IGI). IGI employs and utilizes those techniques and equipment currently available to IGI, including, without limitation, 10X magnification, corrected triplet loupe and binocular microscope, master color comparison diamonds, non-contact-optical measuring device, and such other instruments and/or processes as deemed appropriate by IGI. This Report includes advanced security features. A duly accredited gemologist or jeweler can advise you with respect to the importance of and interrelationship between cut, color, clarity and carat weight.

**THIS REPORT IS NEITHER A GUARANTEE, VALUATION NOR APPRAISAL OF THE GEMSTONE DESCRIBED HEREIN. PLEASE REVIEW THE LIMITATIONS AND RESTRICTIONS SET FORTH. FOR ADDITIONAL INFORMATION AND IMPORTANT LIMITATIONS AND DISCLAIMERS, PLEASE SEE [WWW.IGIONLINE.COM](http://WWW.IGIONLINE.COM) OR CALL 1-888-BUY-IGIS.**

©2014 I.G.I. [igionline.com/igweb/online-report](http://igionline.com/igweb/online-report)

