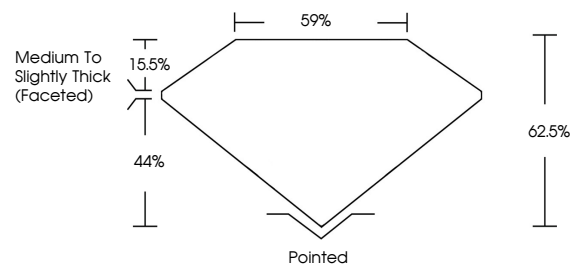




LG455022553

LABORATORY GROWN DIAMOND REPORT

PROPORTIONS

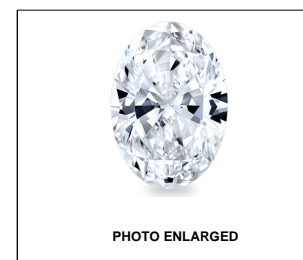


GRADING SCALES

Table with 5 columns for Color Grading Scale (CL, NC, FT, VLT, LT) and Clarity (10x) Grading Scale (FL, IF, VVS, VS, SI, I). Includes sub-labels like 'COLORLESS D-F', 'NEAR COLORLESS G-J', etc.

The laboratory grown diamond described in this Report (Report) has been graded, tested, analyzed, examined and/or inscribed by International Gemological Institute (IGI). A laboratory grown diamond is one that has essentially the same chemical, physical and optical properties as a mined diamond...

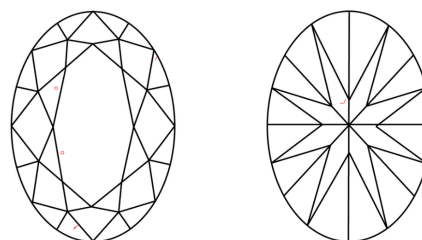
© INTERNATIONAL GEMOLOGICAL INSTITUTE, INC.



LABGROWN IGI LG455022553

LASERSCRIBESM

CLARITY CHARACTERISTICS



KEY TO SYMBOLS

Red symbols indicate internal characteristics. Green symbols indicate external characteristics.

01/07/2021

IGI Report Number LG455022553

Shape and Cutting Style OVAL BRILLIANT

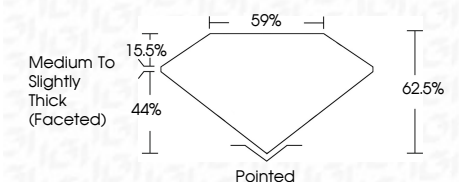
Measurements 10.26 x 7.47 x 4.67 mm

GRADING RESULTS

Carat Weight 2.24 CARATS

Color Grade J

Clarity Grade VS 1



ADDITIONAL GRADING INFORMATION

Polish EXCELLENT

Symmetry EXCELLENT

Fluorescence NONE

Inscription(s) LABGROWN IGI LG455022553



IGI

01/07/2021 IGI Report No. LG455022553 OVAL BRILLIANT 10.26 x 7.47 x 4.67 mm 2.24 CARATS J VS 1 62.5% 59% Medium to Slightly Thick (Faceted) Pointed EXCELLENT EXCELLENT NONE LABGROWN IGI LG455022553