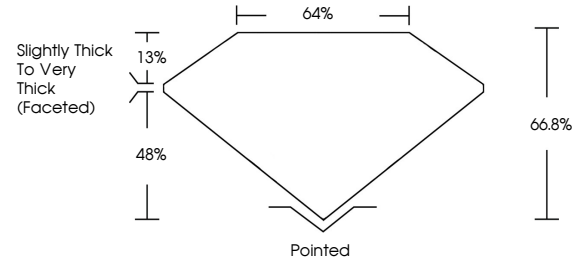




LG455022589

LABORATORY GROWN DIAMOND REPORT

PROPORTIONS



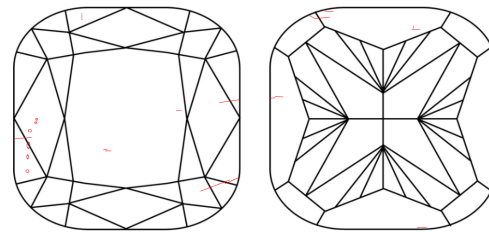
GRADING SCALES

Table with 5 columns for Color Grading Scale (CL, NC, FT, VLT, LT) and Clarity (10x) Grading Scale (FL, IF, VVS, VS, SI, I).

The laboratory grown diamond described in this Report (Report) has been graded, tested, analyzed, examined and/or inscribed by International Gemological Institute (IGI). A laboratory grown diamond is one that has essentially the same chemical, physical and optical properties as a mined diamond...

© INTERNATIONAL GEMOLOGICAL INSTITUTE, INC.

CLARITY CHARACTERISTICS



KEY TO SYMBOLS

Red symbols indicate internal characteristics. Green symbols indicate external characteristics.

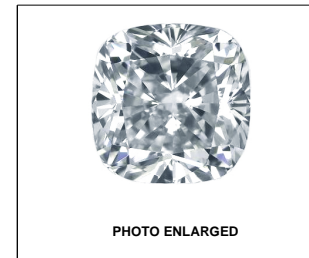


PHOTO ENLARGED

LABGROWN IGI LG455022589

LASERSCRIBE<sup>SM</sup>

01/04/2021

IGI Report Number LG455022589

Shape and Cutting Style SQUARE CUSHION MODIFIED BRILLIANT

Measurements 8.08 x 8.01 x 5.35 mm

GRADING RESULTS

Carat Weight 3.00 CARATS

Color Grade K

Clarity Grade SI 1

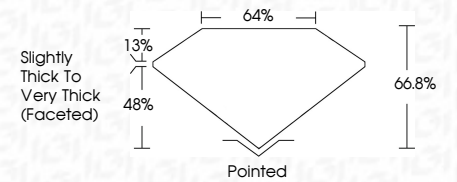
ADDITIONAL GRADING INFORMATION

Polish EXCELLENT

Symmetry EXCELLENT

Fluorescence NONE

Inscription(s) LABGROWN IGI LG455022589



ADDITIONAL GRADING INFORMATION

Polish EXCELLENT

Symmetry EXCELLENT

Fluorescence NONE

Inscription(s) LABGROWN IGI LG455022589



IGI



01/04/2021 IGI Report No. LG455022589 SQUARE CUSHION MODIFIED BRILLIANT 8.08 x 8.01 x 5.35 mm 3.00 CARATS K SI 1 66.8% 48% Slightly Thick To Very Thick (Faceted) Pointed EXCELLENT EXCELLENT NONE LABGROWN IGI LG455022589

