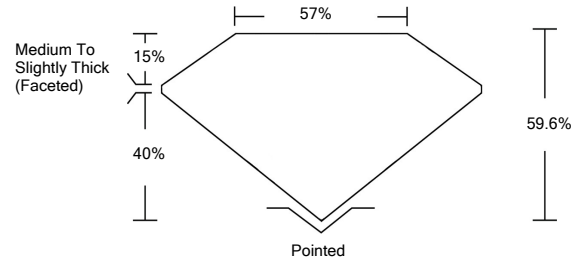




LG478111504

LABORATORY GROWN DIAMOND REPORT

PROPORTIONS

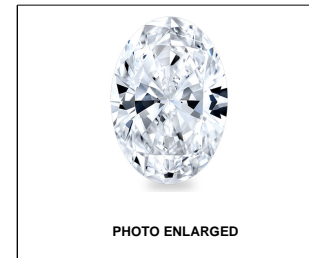


GRADING SCALES

Table with 5 columns for Color Grading Scale (CL, NC, FT, VLT, LT) and Clarity (10x) Grading Scale (FL, IF, VVS, VS, SI, I).

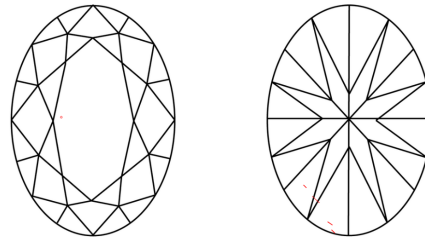
The laboratory grown diamond described in this Report (Report) has been graded, tested, analyzed, examined and/or inscribed by International Gemological Institute (IGI). A laboratory grown diamond is one that has essentially the same chemical, physical and optical properties as a mined diamond...

© INTERNATIONAL GEMOLOGICAL INSTITUTE, INC.



LASERSCRIBE SM

CLARITY CHARACTERISTICS



KEY TO SYMBOLS

Red symbols indicate internal characteristics. Green symbols indicate external characteristics.

05/22/2021 IGI Report Number LG478111504 Shape and Cutting Style OVAL BRILLIANT Measurements 8.19 x 5.97 x 3.56 mm

GRADING RESULTS

Carat Weight 1.11 CARAT Color Grade D Clarity Grade VS 2

ADDITIONAL GRADING INFORMATION

Polish EXCELLENT Symmetry VERY GOOD Fluorescence NONE Inscription(s) LABGROWN IGI LG478111504

Comments: As Grown - No indication of post-growth treatment. This Laboratory Grown Diamond was created by High Pressure High Temperature (HPHT) growth process. Type II

05/22/2021 IGI Report Number LG478111504 Shape and Cutting Style OVAL BRILLIANT Measurements 8.19 x 5.97 x 3.56 mm

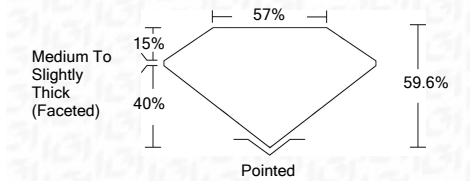
GRADING RESULTS

Carat Weight 1.11 CARAT Color Grade D Clarity Grade VS 2

ADDITIONAL GRADING INFORMATION

Polish EXCELLENT Symmetry VERY GOOD Fluorescence NONE Inscription(s) LABGROWN IGI LG478111504

Comments: As Grown - No indication of post-growth treatment. This Laboratory Grown Diamond was created by High Pressure High Temperature (HPHT) growth process. Type II



IGI

05/22/2021 IGI Report No. LG478111504 OVAL BRILLIANT 8.19 x 5.97 x 3.56 mm 1.11 CARAT D VS 2 59.6% 57% Medium To Slightly Thick (Faceted) Pointed EXCELLENT VERY GOOD NONE LABGROWN IGI LG478111504

As Grown - No indication of post-growth treatment. This Laboratory Grown Diamond was created by High Pressure High Temperature (HPHT) growth process. Type II