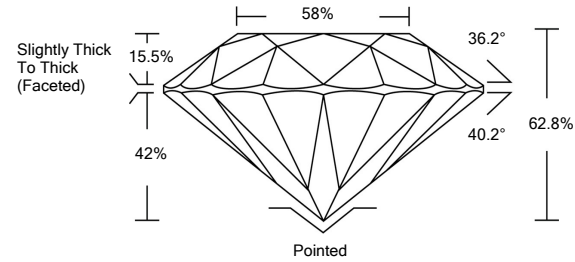




LG480150337

LABORATORY GROWN DIAMOND REPORT

PROPORTIONS



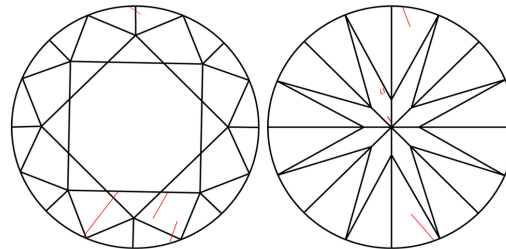
GRADING SCALES

Table with 5 columns for Color Grading Scale (CL to LT) and Clarity (10x) Grading Scale (FL to I). Includes sub-labels like 'COLORLESS D-F', 'NEAR COLORLESS G-J', etc.

The laboratory grown diamond described in this Report (Report) has been graded, tested, analyzed, examined and/or inscribed by International Gemological Institute (IGI). A laboratory grown diamond is one that has essentially the same chemical, physical and optical properties as a mined diamond...

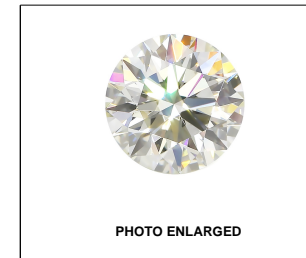
© INTERNATIONAL GEMOLOGICAL INSTITUTE, INC.

CLARITY CHARACTERISTICS



KEY TO SYMBOLS

Red symbols indicate internal characteristics. Green symbols indicate external characteristics.



LABGROWN IGI LG480150337

LASERSCRIBESM

06/23/2021

IGI Report Number LG480150337

Shape and Cutting Style ROUND BRILLIANT

Measurements 7.90 - 7.96 x 4.98 mm

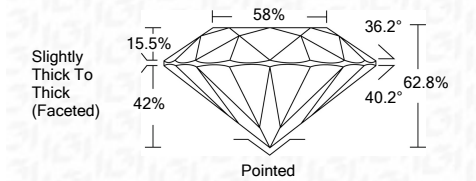
GRADING RESULTS

Carat Weight 2.01 CARATS

Color Grade K

Clarity Grade SI 2

Cut Grade VERY GOOD



ADDITIONAL GRADING INFORMATION

Polish EXCELLENT

Symmetry VERY GOOD

Fluorescence NONE

Inscription(s) LABGROWN IGI LG480150337

Comments: This Laboratory Grown Diamond was created by Chemical Vapor Deposition (CVD) growth process and may include post-growth treatment. Type IIa



IGI

Summary table of report details: IGI Report No. LG480150337, ROUND BRILLIANT, 7.90 - 7.96 x 4.98 mm, 2.01 CARATS, K, SI 2, VERY GOOD, 62.8%, 58%, Slightly Thick To Thick (Faceted), Pointed, EXCELLENT, VERY GOOD, NONE, LABGROWN IGI LG480150337.

