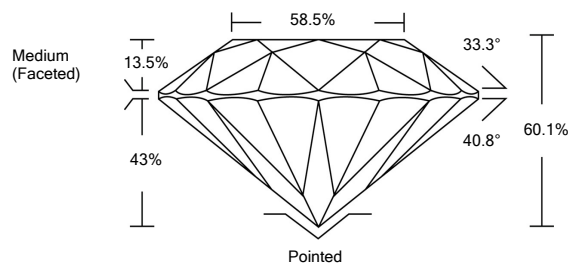




LG483126168

LABORATORY GROWN DIAMOND REPORT

PROPORTIONS



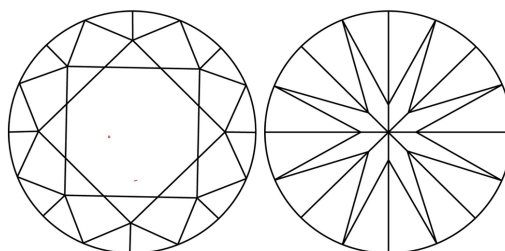
GRADING SCALES

Table with 5 columns for Color Grading Scale (CL, NC, FT, VLT, LT) and Clarity (10x) Grading Scale (FL, IF, VVS, VS, SI, I) with corresponding descriptions.

The laboratory grown diamond described in this Report (Report) has been graded, tested, analyzed, examined and/or inscribed by International Gemological Institute (IGI). A laboratory grown diamond is one that has essentially the same chemical, physical and optical properties as a mined diamond...

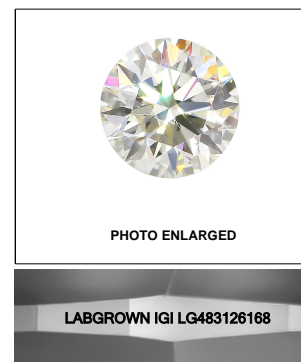
© INTERNATIONAL GEMOLOGICAL INSTITUTE, INC.

CLARITY CHARACTERISTICS



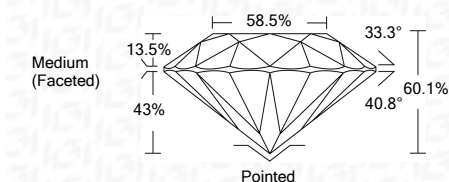
KEY TO SYMBOLS

Red symbols indicate internal characteristics. Green symbols indicate external characteristics.



LASERSCRIBESM

07/06/2021 IGI Report Number LG483126168 Shape and Cutting Style ROUND BRILLIANT Measurements 8.22 - 8.25 x 4.94 mm GRADING RESULTS Carat Weight 2.04 CARATS Color Grade H Clarity Grade VVS 2 Cut Grade IDEAL



ADDITIONAL GRADING INFORMATION

Polish EXCELLENT Symmetry EXCELLENT Fluorescence NONE Inscription(s) LABGROWN IGI LG483126168

Comments: This Laboratory Grown Diamond was created by Chemical Vapor Deposition (CVD) growth process and may include post-growth treatment. Type IIa



IGI

07/06/2021 IGI Report No. LG483126168 ROUND BRILLIANT 8.22 - 8.25 x 4.94 mm 2.04 CARATS H VVS 2 IDEAL 60.1% 58.5% Medium (Faceted) Pointed EXCELLENT EXCELLENT NONE LABGROWN IGI LG483126168 Comments: This Laboratory Grown Diamond was created by Chemical Vapor Deposition (CVD) growth process and may include post-growth treatment. Type IIa