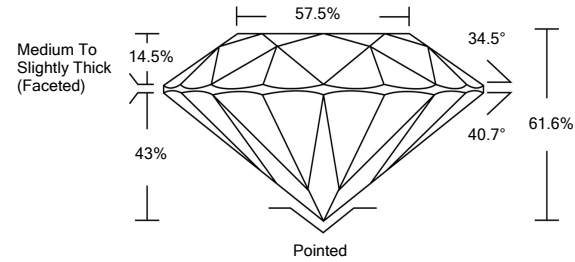




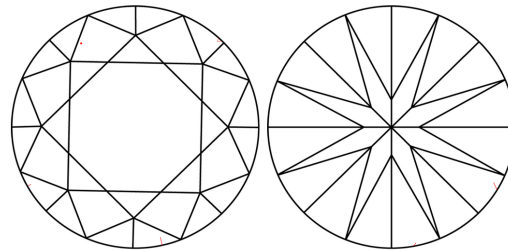
LG488132409

LABORATORY GROWN DIAMOND REPORT

PROPORTIONS



CLARITY CHARACTERISTICS



KEY TO SYMBOLS

Red symbols indicate internal characteristics.
Green symbols indicate external characteristics.

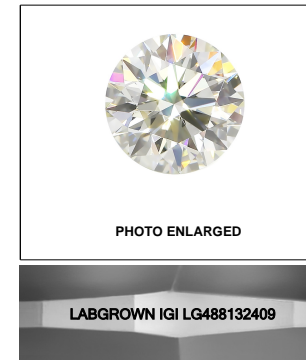
GRADING SCALES

| COLOR GRADING SCALE | CL COLORLESS D-F | NC NEAR COLORLESS G-J | FT FAINT K-M | VL VERY LIGHT N-R | LT LIGHT S-Z | |
|-----------------------------|------------------------------------|--------------------------|------------------------------------|------------------------------|-------------------------|---------------|
| CLARITY (10x) GRADING SCALE | FL FLAWLESS INTERNALLY FLAWLESS | IF INTERNAL FLAWLESS | VVS VERY VERY SLIGHTLY INCLUDED | VS VERY SLIGHTLY INCLUDED | SI SLIGHTLY INCLUDED | I INCLUDED |

The laboratory grown diamond described in this Report (Report) has been graded, tested, analyzed, examined and/or inscribed by International Gemological Institute (IGI). A laboratory grown diamond is one that has essentially the same chemical, physical and optical properties as a mined diamond, with the exception of being grown by man (a manufactured product). IGI employs and utilizes those techniques and equipment currently available to IGI, including, without limitation, 10X magnification, corrected triplet loupe, binocular microscope, master color comparison stones, non-contact-optical measuring device, Diamond Sure™, Diamond View™, Spectrophotometer and such other instruments and/or processes as deemed appropriate by IGI. This Report includes advanced security features. A duly accredited gemologist or jeweler can advise you with respect to the importance of and interrelationship between cut, color, clarity and carat weight.

THIS REPORT IS NEITHER A GUARANTEE, VALUATION, NOR APPRAISAL OF THE GEMSTONE DESCRIBED HEREIN. PLEASE REVIEW THE LIMITATIONS AND RESTRICTIONS SET FORTH ONLINE. FOR ADDITIONAL INFORMATION, IMPORTANT LIMITATIONS AND DISCLAIMERS, PLEASE GO TO WWW.IGI.ORG OR CALL 1-888-BUY-IGIS.

© INTERNATIONAL GEMOLOGICAL INSTITUTE, INC.



LASERSCRIBESM

08/07/2021

IGI Report Number **LG488132409**

Shape and Cutting Style **ROUND BRILLIANT**

Measurements **6.47 - 6.50 x 4.00 mm**

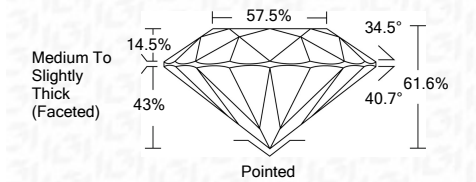
GRADING RESULTS

Carat Weight **1.04 CARAT**

Color Grade **G**

Clarity Grade **VS 1**

Cut Grade **IDEAL**



ADDITIONAL GRADING INFORMATION

Polish **EXCELLENT**

Symmetry **EXCELLENT**

Fluorescence **NONE**

Inscription(s) **LABGROWN IGI LG488132409**

Comments: This Laboratory Grown Diamond was created by Chemical Vapor Deposition (CVD) growth process and may include post-growth treatment.
Type IIa



IGI

| | | | |
|----------------------------|----------------------------|--|--------------|
| 08/07/2021 | IGI Report No. LG488132409 | 1.04 CARAT | G |
| IGI Report No. LG488132409 | ROUND BRILLIANT | VS 1 | IDEAL |
| 6.47 - 6.50 x 4.00 mm | Carat Weight | 61.6% | 57.5% |
| Color Grade | Cut Grade | Medium To Slightly Thick (Faceted) | Pointed |
| Clarity Grade | Color Grade | EXCELLENT | EXCELLENT |
| Cut Grade | Clarity Grade | EXCELLENT | EXCELLENT |
| Depth | Color Grade | NONE | NONE |
| Table | Fluorescence | LABGROWN IGI | LABGROWN IGI |
| Grade | Inscription(s) | LG488132409 | LG488132409 |
| Culet | Comments: | This Laboratory Grown Diamond was created by Chemical Vapor Deposition (CVD) growth process and may include post-growth treatment. | Type IIa |
| Polish | | | |
| Symmetry | | | |
| Fluorescence | | | |
| Inscription(s) | | | |

