



ELECTRONIC COPY

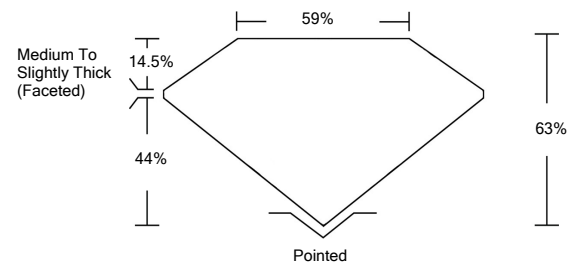
LABORATORY GROWN DIAMOND REPORT

| | |
|---------------------------------------|-------------------------------------|
| March 15, 2022 | |
| IGI Report Number | LG514284959 |
| Description | LABORATORY GROWN DIAMOND |
| Shape and Cutting Style | OVAL BRILLIANT |
| Measurements | 10.40 X 7.30 X 4.60 MM |
| GRADING RESULTS | |
| Carat Weight | 2.20 CARATS |
| Color Grade | E |
| Clarity Grade | VS 2 |
| ADDITIONAL GRADING INFORMATION | |
| Polish | EXCELLENT |
| Symmetry | EXCELLENT |
| Fluorescence | NONE |
| Inscription(s) | LABGROWN IGI LG514284959 |

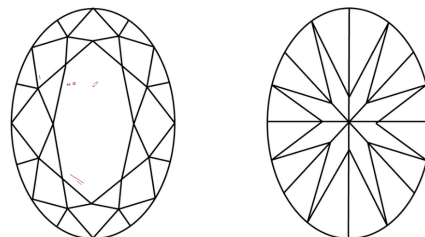
Comments: As Grown - No indication of post-growth treatment.
This Laboratory Grown Diamond was created by High Pressure High Temperature (HPHT) growth process. Type II

LG514284959

PROPORTIONS



CLARITY CHARACTERISTICS

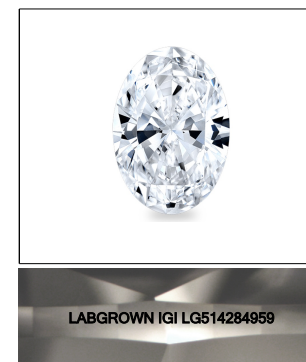


KEY TO SYMBOLS

Red symbols indicate internal characteristics.
Green symbols indicate external characteristics.

GRADING SCALES

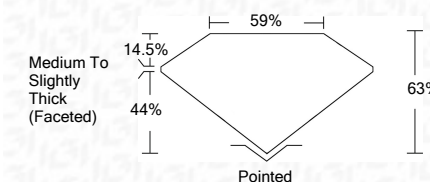
| | | | | | | |
|-----------------------------|------------------------------|-----------------------------|------------------------|-------------------|-----------|---|
| COLOR GRADING SCALE | CL | NC | FT | VLT | LT | |
| | COLORLESS D-F | NEAR COLORLESS G-J | FAINT K-M | VERY LIGHT N-R | LIGHT S-Z | |
| CLARITY (10x) GRADING SCALE | FL | IF | VVS | VS | SI | I |
| | FLAWLESS INTERNALLY FLAWLESS | VERY VERY SLIGHTLY INCLUDED | VERY SLIGHTLY INCLUDED | SLIGHTLY INCLUDED | INCLUDED | |



LASERSCRIBESM

Sample Image Used

| | |
|-------------------------|-------------------------------------|
| March 15, 2022 | |
| IGI Report Number | LG514284959 |
| Description | LABORATORY GROWN DIAMOND |
| Shape and Cutting Style | OVAL BRILLIANT |
| Measurements | 10.40 X 7.30 X 4.60 MM |
| GRADING RESULTS | |
| Carat Weight | 2.20 CARATS |
| Color Grade | E |
| Clarity Grade | VS 2 |



| | |
|---------------------------------------|---------------------------------|
| ADDITIONAL GRADING INFORMATION | |
| Polish | EXCELLENT |
| Symmetry | EXCELLENT |
| Fluorescence | NONE |
| Inscription(s) | LABGROWN IGI LG514284959 |

Comments: As Grown - No indication of post-growth treatment.
This Laboratory Grown Diamond was created by High Pressure High Temperature (HPHT) growth process. Type II



| | | | | | | | | | | | | |
|----------------|----------------------------|------------------------|---|------|-----|-----|------------------------------------|---------|-----------|-----------|------|--------------------------|
| March 15, 2022 | IGI Report No. LG514284959 | 2.20 CARATS | E | VS 2 | 63% | 59% | Medium To Slightly Thick (Faceted) | Pointed | EXCELLENT | EXCELLENT | NONE | LABGROWN IGI LG514284959 |
| | OVAL BRILLIANT | 10.40 X 7.30 X 4.60 MM | | | | | | | | | | |
| | Carat Weight | | | | | | | | | | | |
| | Color Grade | | | | | | | | | | | |
| | Clarity Grade | | | | | | | | | | | |
| | Depth | | | | | | | | | | | |
| | Table | | | | | | | | | | | |
| | Girdle | | | | | | | | | | | |
| | Culet | | | | | | | | | | | |
| | Polish | | | | | | | | | | | |
| | Symmetry | | | | | | | | | | | |
| | Fluorescence | | | | | | | | | | | |
| | Inscription(s) | | | | | | | | | | | |
| | Comments: | | | | | | | | | | | |

As Grown - No indication of post-growth treatment.
This Laboratory Grown Diamond was created by High Pressure High Temperature (HPHT) growth process. Type II