



**ELECTRONIC COPY**

**LABORATORY GROWN DIAMOND REPORT**

LG515223738

**LABORATORY GROWN  
DIAMOND REPORT**

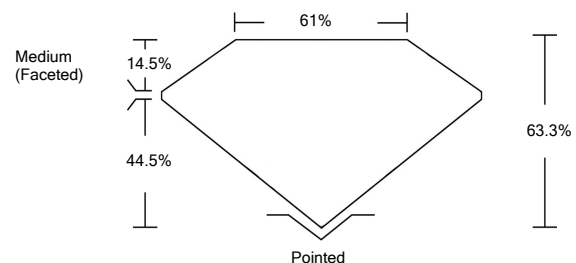
LABORATORY GROWN DIAMOND REPORT

|                                       |                                     |
|---------------------------------------|-------------------------------------|
| March 4, 2022                         |                                     |
| IGI Report Number                     | <b>LG515223738</b>                  |
| Description                           | <b>LABORATORY GROWN<br/>DIAMOND</b> |
| Shape and Cutting Style               | <b>PEAR BRILLIANT</b>               |
| Measurements                          | <b>9.12 X 5.64 X 3.57 MM</b>        |
| <b>GRADING RESULTS</b>                |                                     |
| Carat Weight                          | <b>1.07 CARAT</b>                   |
| Color Grade                           | <b>FANCY LIGHT BLUE</b>             |
| Clarity Grade                         | <b>VVS 2</b>                        |
| <b>ADDITIONAL GRADING INFORMATION</b> |                                     |
| Polish                                | <b>EXCELLENT</b>                    |
| Symmetry                              | <b>EXCELLENT</b>                    |
| Fluorescence                          | <b>NONE</b>                         |
| Inscription(s)                        | <b>LABGROWN IGI LG515223738</b>     |

Comments: As Grown - No indication of post-growth treatment.

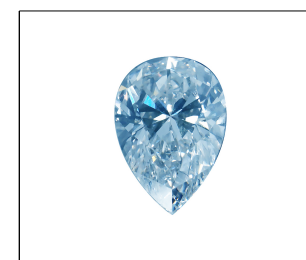
This Laboratory Grown Diamond was created by High Pressure High Temperature (HPHT) growth process.

**PROPORTIONS**



**GRADING SCALES**

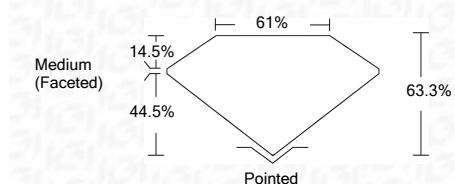
|                             |                              |                             |                        |                   |           |   |
|-----------------------------|------------------------------|-----------------------------|------------------------|-------------------|-----------|---|
| COLOR GRADING SCALE         | CL                           | NC                          | FT                     | VLT               | LT        |   |
|                             | COLORLESS D-F                | NEAR COLORLESS G-J          | FAINT K-M              | VERY LIGHT N-R    | LIGHT S-Z |   |
| CLARITY (10x) GRADING SCALE | FL                           | IF                          | VVS                    | VS                | SI        | I |
|                             | FLAWLESS INTERNALLY FLAWLESS | VERY VERY SLIGHTLY INCLUDED | VERY SLIGHTLY INCLUDED | SLIGHTLY INCLUDED | INCLUDED  |   |



**LASERSCRIBE<sup>SM</sup>**

Sample Image Used

|                         |                                     |
|-------------------------|-------------------------------------|
| March 4, 2022           |                                     |
| IGI Report Number       | <b>LG515223738</b>                  |
| Description             | <b>LABORATORY GROWN<br/>DIAMOND</b> |
| Shape and Cutting Style | <b>PEAR BRILLIANT</b>               |
| Measurements            | <b>9.12 X 5.64 X 3.57 MM</b>        |
| <b>GRADING RESULTS</b>  |                                     |
| Carat Weight            | <b>1.07 CARAT</b>                   |
| Color Grade             | <b>FANCY LIGHT BLUE</b>             |
| Clarity Grade           | <b>VVS 2</b>                        |



|                                       |                                 |
|---------------------------------------|---------------------------------|
| <b>ADDITIONAL GRADING INFORMATION</b> |                                 |
| Polish                                | <b>EXCELLENT</b>                |
| Symmetry                              | <b>EXCELLENT</b>                |
| Fluorescence                          | <b>NONE</b>                     |
| Inscription(s)                        | <b>LABGROWN IGI LG515223738</b> |

Comments: As Grown - No indication of post-growth treatment.  
This Laboratory Grown Diamond was created by High Pressure High Temperature (HPHT) growth process.



**IGI**

|   |  |
|---|--|
| March 4, 2022   |  |
| IGI Report No. LG515223738  |  |
| <b>PEAR BRILLIANT</b>   |  |
| 9.12 X 5.64 X 3.57 MM   |  |
| 1.07 CARAT  |  |
| FANCY LIGHT BLUE  |  |
| VVS 2   |  |
| 63.3%   |  |
| 61%   |  |
| Medium (Faceted)  |  |
| Pointed   |  |
| EXCELLENT   |  |
| EXCELLENT   |  |
| NONE  |  |
| LABGROWN IGI LG515223738  |  |
| <b>Comments:</b>  |  |
| As Grown - No indication of post-growth treatment. This Laboratory Grown Diamond was created by High Pressure High Temperature (HPHT) growth process. |  |