



ELECTRONIC COPY

LABORATORY GROWN DIAMOND REPORT

May 19, 2022
IGI Report Number LG523282353
Description LABORATORY GROWN DIAMOND
Shape and Cutting Style OVAL BRILLIANT
Measurements 10.37 X 7.02 X 4.41 MM

GRADING RESULTS

Carat Weight 2.02 CARATS
Color Grade D
Clarity Grade VS 1

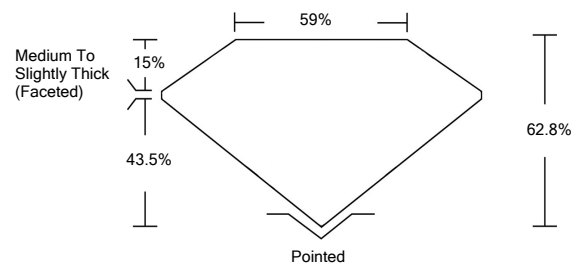
ADDITIONAL GRADING INFORMATION

Polish EXCELLENT
Symmetry EXCELLENT
Fluorescence NONE
Inscription(s) LABGROWN IGI LG523282353

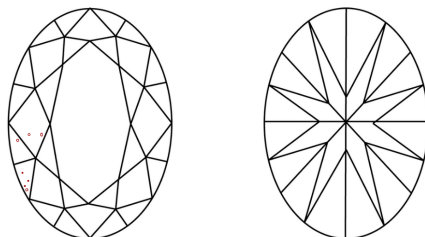
Comments: As Grown - No indication of post-growth treatment. This Laboratory Grown Diamond was created by High Pressure High Temperature (HPHT) growth process. Type II

LG523282353

PROPORTIONS



CLARITY CHARACTERISTICS

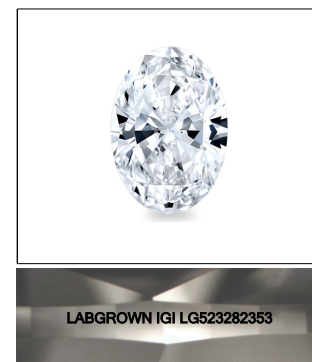


KEY TO SYMBOLS

Red symbols indicate internal characteristics. Green symbols indicate external characteristics.

GRADING SCALES

Table showing Color Grading Scale (CL to LT) and Clarity (10x) Grading Scale (FL to I).



LASERSCRIBE SM Sample Image Used

May 19, 2022
IGI Report Number LG523282353
Description LABORATORY GROWN DIAMOND
Shape and Cutting Style OVAL BRILLIANT
Measurements 10.37 X 7.02 X 4.41 MM

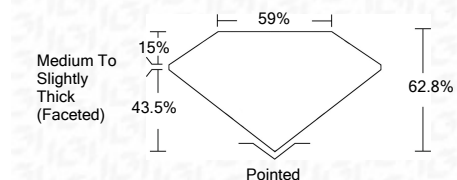
GRADING RESULTS

Carat Weight 2.02 CARATS
Color Grade D
Clarity Grade VS 1

ADDITIONAL GRADING INFORMATION

Polish EXCELLENT
Symmetry EXCELLENT
Fluorescence NONE
Inscription(s) LABGROWN IGI LG523282353

Comments: As Grown - No indication of post-growth treatment. This Laboratory Grown Diamond was created by High Pressure High Temperature (HPHT) growth process. Type II



May 19, 2022
IGI Report No. LG523282353
OVAL BRILLIANT
10.37 X 7.02 X 4.41 MM
Carat Weight 2.02 CARATS
Color Grade D
Clarity Grade VS 1
Depth 62.8%
Table 43.5%
Girdle Medium To Slightly Thick (Faceted)
Culet Pointed
Polish EXCELLENT
Symmetry EXCELLENT
Fluorescence NONE
Inscription(s) LABGROWN IGI LG523282353
Comments: As Grown - No indication of post-growth treatment. This Laboratory Grown Diamond was created by High Pressure High Temperature (HPHT) growth process. Type II