

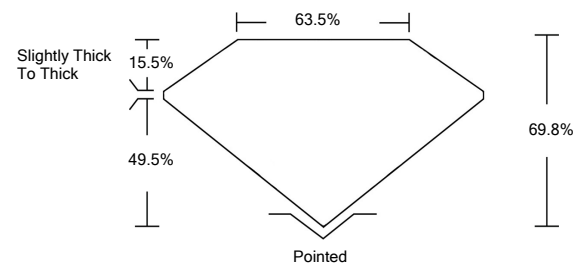


ELECTRONIC COPY

LABORATORY GROWN DIAMOND REPORT

LG526274815

PROPORTIONS



GRADING SCALES

| | | | | | | |
|-----------------------------|------------------------------|-----------------------------|------------------------|-------------------|-----------|---|
| COLOR GRADING SCALE | CL | NC | FT | VLT | LT | |
| | COLORLESS D-F | NEAR COLORLESS G-J | FAINT K-M | VERY LIGHT N-R | LIGHT S-Z | |
| CLARITY (10x) GRADING SCALE | FL | IF | VVS | VS | SI | I |
| | FLAWLESS INTERNALLY FLAWLESS | VERY VERY SLIGHTLY INCLUDED | VERY SLIGHTLY INCLUDED | SLIGHTLY INCLUDED | INCLUDED | |

April 30, 2022
 IGI Report Number **LG526274815**
 Description **LABORATORY GROWN DIAMOND**
 Shape and Cutting Style **CUT CORNERED RECTANGULAR MODIFIED BRILLIANT**
 Measurements **8.22 X 6.13 X 4.28 MM**

GRADING RESULTS

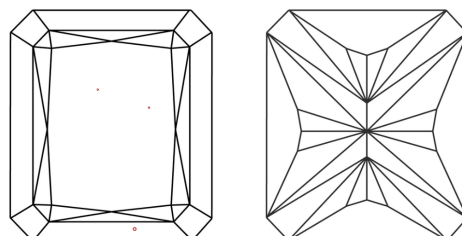
Carat Weight **2.02 CARATS**
 Color Grade **F**
 Clarity Grade **VS 1**

ADDITIONAL GRADING INFORMATION

Polish **EXCELLENT**
 Symmetry **EXCELLENT**
 Fluorescence **NONE**
 Inscription(s) **LABGROWN IGI LG526274815**

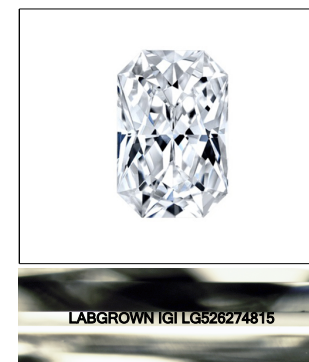
Comments: This Laboratory Grown Diamond was created by Chemical Vapor Deposition (CVD) growth process and may include post-growth treatment.
 Type IIa

CLARITY CHARACTERISTICS



KEY TO SYMBOLS

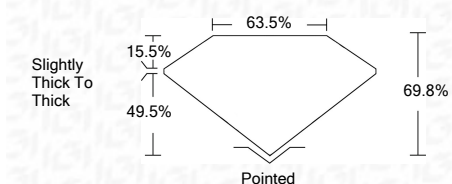
Red symbols indicate internal characteristics.
 Green symbols indicate external characteristics.



LASERSCRIBESM

Sample Image Used

April 30, 2022
 IGI Report Number **LG526274815**
 Description **LABORATORY GROWN DIAMOND**
 Shape and Cutting Style **CUT CORNERED RECTANGULAR MODIFIED BRILLIANT**
 Measurements **8.22 X 6.13 X 4.28 MM**
GRADING RESULTS
 Carat Weight **2.02 CARATS**
 Color Grade **F**
 Clarity Grade **VS 1**



ADDITIONAL GRADING INFORMATION

Polish **EXCELLENT**
 Symmetry **EXCELLENT**
 Fluorescence **NONE**
 Inscription(s) **LABGROWN IGI LG526274815**

Comments: This Laboratory Grown Diamond was created by Chemical Vapor Deposition (CVD) growth process and may include post-growth treatment.
 Type IIa



IGI



April 30, 2022
 IGI Report No. LG526274815
CUT CORNERED RECT. MODIFIED BRILLIANT
 Dimensions: 8.22 X 6.13 X 4.28 MM
 Carat Weight: 2.02 CARATS
 Color Grade: F
 Clarity Grade: VS 1
 Depth: 69.8%
 Table: 15.5%
 Girdle: 63.5%
 Slightly Thick To Thick
 Culet: Pointed
 Polish: EXCELLENT
 Symmetry: EXCELLENT
 Fluorescence: NONE
 Inscription(s): LABGROWN IGI LG526274815
 Comments: This Laboratory Grown Diamond was created by Chemical Vapor Deposition (CVD) growth process and may include post-growth treatment. Type IIa